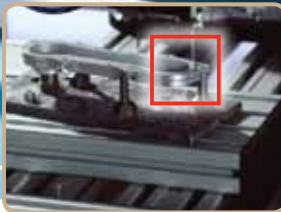


**Your Source for  
GASKETING & SEALING  
SILICONE  
ADHESIVES & SEALANTS**



[ **Loctite® Formed-In-Place Silicone Gasketing Properties Chart** ]

<b>LOCTITE® PRODUCT</b>	<b>ITEM NUMBER</b>	<b>PACKAGE TYPE/SIZE</b>	<b>COLOR/ MIX RATIO</b>	<b>TYPICAL USE</b>	<b>GAP FILL</b>	<b>EXTRUSION RATE (g/min.)</b>	<b>TEMP. RANGE</b>	<b>CURE METHOD</b>	<b>CURE SPEED*</b>	<b>SPECIFIC GRAVITY</b>	<b>DUROMETER<sup>Δ</sup></b>	<b>% ELONGATION</b>	<b>TENSILE STRENGTH (psi)<sup>†</sup></b>	<b>STATIC MIXER</b>	<b>AGENCY APPROVALS</b>
<b>5045™</b>	40409	3 oz. tube	Clear/	Military, high tensile	0.250 in.	40	-65°F to 400°F (-54°C) to (204°C)	Moisture	Tack Free – 1.5 hrs. Full Cure – 24 hrs.	1.14	25	>500	>493	N/A	MIL-A- 46146B
	40408	300 ml cartridge	N/A												
	40724	40 lb. pail													
<b>5600™</b>	Part A - 41327 Part B - 41732	440 lb. drum 575 lb. drum	Black/ 2:1	High adhesion, fast fixture	Unlimited	N/A	-40°F to 450°F (-40°C) to (232°C)	Two-part	Tack Free – 10 min.	1.40	A 40	200	250	874905	UL Listed for U.S.
	Part A - 922122 Part B - 922089	4.5 gallon pail 3.5 gallon pail	A:B by volume												
	922546	400 ml dual cartridge													
	Part A - 922129 Part B - 41732	440 lb. drum 575 lb. drum	Grey/ 2:1												
	Part A - 922128 Part B - 922089	4.5 gallon pail 3.5 gallon pail	A:B by volume												
	922544	400 ml dual cartridge													
	Part A - 924107 Part B - 922089	4.5 gallon pail 3.5 gallon pail	Almond/ 2:1												
924104	400 ml dual cartridge	A:B by volume													
<b>5605™</b>	1250155	400 ml dual cartridge	Grey/ 4:1	General- purpose, high adhesion, fast fixture, noncorrosive, easy gunning	Unlimited	N/A	-40°F to 450°F (-40°C) to (232°C)	Two-part	Tack Free – 10 min.	1.375	A 40	240	270	874905	N/A
	Part A - 1253201 <sup>†</sup> Part B - 1251677	4.5 gallon pail 3.5 gallon pail	A:B by volume												
	<b>NEW</b> Part A - 1253202 <sup>**</sup> Part B - 1250758	440 lb. drum 575 lb. drum													
<b>5606™</b>	1250154	400 ml dual cartridge	Grey/ 4:1	General- purpose, high adhesion, fast fixture, noncorrosive, easy gunning	Unlimited	N/A	-40°F to 450°F (-40°C) to (232°C)	Two-part	Tack Free – 15 min.	1.375	A 38	170	260	874905	N/A
	Part A - 1253201 <sup>†</sup> Part B - 1250755	4.5 gallon pail 3.5 gallon pail	A:B by volume												
	<b>NEW</b> Part A - 1253202 <sup>**</sup> Part B - 1250156	440 lb. drum 575 lb. drum													
<b>5607™</b>	1252929	400 ml dual cartridge	Grey/ 2:1	General- purpose, high adhesion, fast fixture, noncorrosive, easy gunning	Unlimited	N/A	-40°F to 450°F (-40°C) to (232°C)	Two-part	Tack Free – 45 min.	1.425	A 43	150	225	874905	N/A
	Part A - 1253201 <sup>†</sup> Part B - 1250756	4.5 gallon pail 3.5 gallon pail	A:B by volume												
	<b>NEW</b> Part A - 1253202 <sup>**</sup> Part B - 1250757	440 lb. drum 575 lb. drum													
<b>5613™</b>	1253211	400 ml dual cartridge	Black/ 2:1	Oil resistant, high adhesion, fast fixture, noncorrosive, easy gunning	Unlimited	N/A	-40°F to 450°F (-40°C) to (232°C)	Two-part	Tack Free – 10 min.	1.425	A 47	155	220	874905	N/A
	Part A - 1253208 Part B - 1253206	4.5 gallon pail 3.5 gallon pail	A:B by volume												
	<b>NEW</b> Part A - 1253207 Part B - 1253212	440 lb. drum 575 lb. drum													

= Indicates Worldwide Availability

\* Varies with substrates    Δ Shore A    † Grit-blasted steel  
<sup>†</sup> 5600™ Series – Part A (1253201) can be used with 5605™, 5606™, 5607™ – Part B (3.5 gallon pail).  
<sup>\*\*</sup> 5600™ Series – Part A (1253202) can be used with 5605™, 5606™, 5607™ – Part B (575 lb. drum).

[ More Loctite® Formed-In-Place Silicone Gasketing Properties Chart ]

LOCTITE® PRODUCT	ITEM NUMBER	PACKAGE TYPE/SIZE	COLOR/MIX RATIO	TYPICAL USE	GAP FILL (INCHES)	EXTRUSION RATE (g/min.)	TEMP. RANGE	CURE METHOD	CURE SPEED*	SPECIFIC GRAVITY	DUROMETER <sup>1</sup>	% ELONGATION	TENSILE STRENGTH (psi) <sup>1</sup>	AGENCY APPROVALS
<b>5620™</b>	1257593	50 ml dual cartridge	Ultra-Clear / 1:1 A:B by volume	Ultra-clear potting, encapsulating, and sealing; noncorrosive	Unlimited	N/A	-40°F to 450°F (-40°C to 232°C)	Two-part	30 min.	1.00	A 35	N/A	N/A	N/A
	<b>NEW</b> 1257478	400 ml dual cartridge												
	Part A - 1257595 Part B - 1257597	40 lb. pail 40 lb. pail												
	Part A - 1257594 Part B - 1257596	400 lb. drum 400 lb. drum												
<b>5699™ GREY</b>	18718 18581 18582 18583 40505	70 ml tube 300 ml cartridge 50 lb. pail 550 lb. drum 190 ml can	Grey	Oil/water resistant	0.250	250	-75°F to 625°F	Moisture	Tack Free – 30 min. Full Cure – 24 hrs.	1.45	55	160	435	CFIA
<b>5900®</b>	20166 20167 20168	300 ml cartridge 50 lb. pail 550 lb. drum	Black	High adhesion, instant seal	0.250	35	-65°F to 500°F	Moisture	Tack Free – 20 min. Full Cure – 24 hrs.	1.34	35	550	200	CFIA, NSF P1
<b>5905™</b>	38535 36923	300 ml cartridge 50 lb. pail	Black	High adhesion, fast cure depth	0.240	350	-65°F to 500°F	Moisture	Tack Free – 20 min. Full Cure – 24 hrs.	1.30	39	345	270	CFIA
	40969 40515	300 ml cartridge 50 lb. pail	White											
<b>5910®</b>	21746 21747 21748	300 ml cartridge 50 lb. pail 550 lb. drum	Black	High adhesion	0.240	600	-65°F to 500°F	Moisture	Tack Free – 20 min. Full Cure – 24 hrs.	1.34	30	550	200	CFIA
<b>5920™ COPPER</b>	30542 82046 21472	70 ml tube 300 ml cartridge 40 lb. pail	Copper	High temperature	0.240	>300	-65°F to 700°F	Moisture	Tack Free – 60 min. Full Cure – 24 hrs.	1.05	31	355	275	CFIA
<b>5970™</b>	39246 35230 35229	300 ml cartridge 50 lb. pail 550 lb. drum	Black	Oil/water resistance	0.240	60	-40°F to 450°F (-40°C) to 232°C)	Moisture	Tack Free – 25 min. Full Cure – 24 hrs.	1.41	A 44	>200	278	N/A
<b>5999™</b>	21744 28298 20170	300 ml cartridge 50 lb. pail 550 lb. drum	Grey	Oil/water resistant, instant seal	0.240	105	-75°F to 625°F	Moisture	Tack Free – 10 min. Full Cure – 24 hrs.	1.45	60	175	500	N/A



= Indicates Worldwide Availability

\* Varies with substrates

<sup>1</sup> Shore A

<sup>1</sup> Grit-blasted steel