

Your Source for  
**LUBRICATING**



[ Table of Contents ]

LUBRICATING	93
ANTI-SEIZE	95
LUBRICANTS	99

[ Lubricants ]

Loctite® lubricants offer superior protection for industrial equipment. When choosing a lubricant, it is important to consider the intended application as well as the environment of the application. The typical function of a lubricant is to protect against friction and wear; however, in an industrial environment, there are other factors working against the product, including high temperature, harsh chemicals and contaminants. Lubricants are also used to protect against corrosion by displacing moisture and leaving a film on the part.

**BENEFITS OF A SYNTHETIC LUBRICANT**

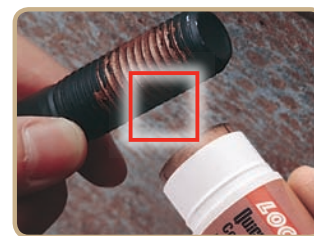
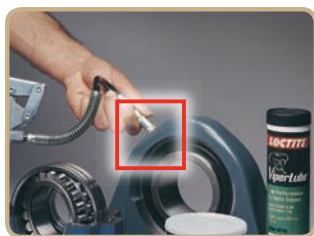
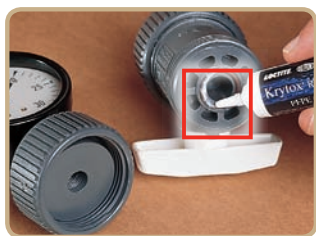
- Improved high temperature performance
- Higher lubricity
- Superior water-washout properties
- Higher purity

Your Source **LUBRICATION GUIDE**

**WHAT TYPE OF LUBRICATION IS NEEDED?**

Dry Film	Grease	Penetrating Oils
<p><b>Loctite® Moly Dry Film Lubricant</b></p> <p>Item # 39895 12 oz. net wt. aerosol 39896 1.3 lb. can 39897 10 lb. can</p> <p><b>Krytox® RFE Advanced PTFE Dry Lubricant</b></p> <p>Item # 30138 8 oz. net wt. aerosol</p> <p><b>Loctite® C-200® High Temperature Solid Film Lubricant</b></p> <p>Item # 39893 1.3 lb. can 39894 10 lb. can</p>	<p><b>SPECIALTY</b></p> <p><b>Loctite® Dielectric Grease</b></p> <p>Item # 30536 0.33 oz. tube 37535 3 oz. tube</p> <p><b>Loctite® Extreme Pressure Grease</b></p> <p>Item # 51242 14.5 oz. cartridge</p> <p><b>Loctite® Food Grade Grease</b></p> <p>Item # 51252 14.5 oz. cartridge</p> <p><b>Loctite® Hydraulic Jack Oil</b></p> <p>Item # 30523 1 gallon can</p>	<p><b>Loctite® Penetrating Oil</b></p> <p>Item # 51221 12 oz. net wt. aerosol</p> <p><b>Loctite® Solvo-Rust® Super Penetrating Oil</b></p> <p>Item # 81252 12.25 oz. net wt. aerosol</p> <p><b>Loctite® Maintain® Lubricant Penetrant</b></p> <p>Item # 81204 16 oz. net wt. aerosol</p> <p><b>Loctite® Freeze &amp; Release</b></p> <p>Item # 996456 13.52 oz. net wt. aerosol</p>
	<p><b>HIGH PERFORMANCE</b></p> <p><b>Loctite® ViperLube® High Performance Synthetic Grease</b></p> <p>Item # 36780 1 cc tube 36781 3 oz. tube 36782 14 oz. cartridge 36783 400 g can 36784 0.42 oz. tube 36786 10.1 oz. net wt. aerosol 37061 30 lb. pail 37710 120 lb. drum 39146 55 gallon drum</p> <p><b>Loctite® ViperLube® Clear High Performance Synthetic Grease</b></p> <p>Item # 39341 3 oz. tube 39342 400 g cartridge</p>	<p><b>General Purpose</b></p> <p><b>Loctite® Gear, Chain and Cable Lubricant</b></p> <p>Item # 81251 12 oz. net wt. aerosol</p> <p><b>Loctite® Silicone Lubricant</b></p> <p>Item # 51360 150 g tube 81246 13 oz. net wt. aerosol</p> <p><b>Loctite® White Lithium Grease</b></p> <p>Item # 30530 1.5 oz. tube 30543 10.75 oz. net wt. aerosol</p>
	<p><b>SEVERE CHEMICAL CONTACT</b></p> <p><b>Krytox® RFE PTFE Lubricant (O-Ring Lubricant)</b></p> <p>Item # 29710 2 oz. tube 31361 16 oz. cartridge</p> <p><b>Krytox® RFE PTFE High Performance Lubricant</b></p> <p>Item # 29711 2 oz. tube 29709 16 oz. cartridge</p>	

PLEASE NOTE: The charts on these two pages should not be used to specify products without specific testing. It is recommended that you conduct on-part testing to ensure product performance before specifying any anti-seize or lubricating product.



## Your Source **ANTI-SEIZE GUIDE**

### WHAT TYPE OF ANTI-SEIZE PROTECTION IS NEEDED?

General Purpose	Power Plant	Soft Metal	Up to 750°F																																																																																										
<b>UP TO 1600°F</b>	<b>UP TO 1800°F</b>	<b>Loctite® Silver Grade Anti-Seize</b>	<b>THREAD LUBRICANT</b>																																																																																										
<b>Loctite® Silver Grade Anti-Seize &amp; Loctite® QuickStix™ Silver Anti-Seize</b>	<b>Loctite® N-1000™ High Purity Anti-Seize</b>	<table border="0"> <tr><td>Item #</td><td>38181</td><td>7 g pouch</td></tr> <tr><td></td><td>80209</td><td>4 oz. brush-top can</td></tr> <tr><td></td><td>76732</td><td>8 oz. brush-top can</td></tr> <tr><td></td><td>76759</td><td>12 oz. net wt. aerosol</td></tr> <tr><td></td><td>76764</td><td>1 lb. brush-top can</td></tr> <tr><td></td><td>80206</td><td>1 gallon can</td></tr> <tr><td></td><td>76775</td><td>5 gallon pail</td></tr> <tr><td></td><td>37230</td><td>20 g stick – QuickStix™</td></tr> <tr><td></td><td>39223</td><td>40 g stick – QuickStix™</td></tr> </table>	Item #	38181	7 g pouch		80209	4 oz. brush-top can		76732	8 oz. brush-top can		76759	12 oz. net wt. aerosol		76764	1 lb. brush-top can		80206	1 gallon can		76775	5 gallon pail		37230	20 g stick – QuickStix™		39223	40 g stick – QuickStix™	<b>Loctite® Moly-50™ Anti-Seize</b>																																																															
Item #	38181	7 g pouch																																																																																											
	80209	4 oz. brush-top can																																																																																											
	76732	8 oz. brush-top can																																																																																											
	76759	12 oz. net wt. aerosol																																																																																											
	76764	1 lb. brush-top can																																																																																											
	80206	1 gallon can																																																																																											
	76775	5 gallon pail																																																																																											
	37230	20 g stick – QuickStix™																																																																																											
	39223	40 g stick – QuickStix™																																																																																											
	<table border="0"> <tr><td>Item #</td><td>51115</td><td>8 oz. brush-top can</td></tr> <tr><td></td><td>51116</td><td>1 lb. can</td></tr> <tr><td></td><td>51117</td><td>2 lb. can</td></tr> </table>	Item #	51115	8 oz. brush-top can		51116	1 lb. can		51117	2 lb. can	<table border="0"> <tr><td>Item #</td><td>38181</td><td>7 g pouch</td></tr> <tr><td></td><td>80209</td><td>4 oz. brush-top can</td></tr> <tr><td></td><td>76732</td><td>8 oz. brush-top can</td></tr> <tr><td></td><td>76759</td><td>12 oz. net wt. aerosol</td></tr> <tr><td></td><td>76764</td><td>1 lb. brush-top can</td></tr> <tr><td></td><td>80206</td><td>1 gallon can</td></tr> <tr><td></td><td>76775</td><td>5 gallon pail</td></tr> </table>	Item #	38181	7 g pouch		80209	4 oz. brush-top can		76732	8 oz. brush-top can		76759	12 oz. net wt. aerosol		76764	1 lb. brush-top can		80206	1 gallon can		76775	5 gallon pail	<table border="0"> <tr><td>Item #</td><td>51094</td><td>1 lb. can</td></tr> </table> <p style="text-align: right;"><b>METAL-FREE</b></p>	Item #	51094	1 lb. can																																																									
Item #	51115	8 oz. brush-top can																																																																																											
	51116	1 lb. can																																																																																											
	51117	2 lb. can																																																																																											
Item #	38181	7 g pouch																																																																																											
	80209	4 oz. brush-top can																																																																																											
	76732	8 oz. brush-top can																																																																																											
	76759	12 oz. net wt. aerosol																																																																																											
	76764	1 lb. brush-top can																																																																																											
	80206	1 gallon can																																																																																											
	76775	5 gallon pail																																																																																											
Item #	51094	1 lb. can																																																																																											
<b>UP TO 1800°F</b>	<b>UP TO 2400°F</b>	<b>Water-Resistant</b>	<b>EXTREME PRESSURE</b>																																																																																										
<b>Loctite® C5-A® Copper Anti-Seize Lubricant &amp; Loctite® QuickStix™ C5-A® Copper Anti-Seize</b>	<b>Loctite® N-5000™ High Purity Anti-Seize</b>	<b>Loctite® Marine Grade Anti-Seize</b>	<b>Loctite® Moly Paste</b>																																																																																										
<table border="0"> <tr><td>Item #</td><td>51299</td><td>2 g pouch</td></tr> <tr><td></td><td>51277</td><td>7 g pouch</td></tr> <tr><td></td><td>51001</td><td>1 oz. tube</td></tr> <tr><td></td><td>51002</td><td>4 oz. tube</td></tr> <tr><td></td><td>51144</td><td>4 oz. brush-top can</td></tr> <tr><td></td><td>51147</td><td>8 oz. brush-top can</td></tr> <tr><td></td><td>51005</td><td>10 oz. brush-top can</td></tr> <tr><td></td><td>51003</td><td>12 oz. net wt. aerosol</td></tr> <tr><td></td><td>51004</td><td>13 oz. cartridge</td></tr> <tr><td></td><td>51006</td><td>1 lb. can</td></tr> <tr><td></td><td>51007</td><td>1 lb. brush-top can</td></tr> <tr><td></td><td>39643</td><td>1 lb. brush-top metal can</td></tr> <tr><td></td><td>51008</td><td>2.5 lb. can</td></tr> <tr><td></td><td>51009</td><td>8 lb. can</td></tr> <tr><td></td><td>38584</td><td>25 lb. pail</td></tr> <tr><td></td><td>51011</td><td>42 lb. pail</td></tr> <tr><td></td><td>51146</td><td>425 lb. drum</td></tr> <tr><td></td><td>37229</td><td>20 g stick – QuickStix™</td></tr> <tr><td></td><td>39222</td><td>40 g stick – QuickStix™</td></tr> </table>	Item #	51299	2 g pouch		51277	7 g pouch		51001	1 oz. tube		51002	4 oz. tube		51144	4 oz. brush-top can		51147	8 oz. brush-top can		51005	10 oz. brush-top can		51003	12 oz. net wt. aerosol		51004	13 oz. cartridge		51006	1 lb. can		51007	1 lb. brush-top can		39643	1 lb. brush-top metal can		51008	2.5 lb. can		51009	8 lb. can		38584	25 lb. pail		51011	42 lb. pail		51146	425 lb. drum		37229	20 g stick – QuickStix™		39222	40 g stick – QuickStix™	<table border="0"> <tr><td>Item #</td><td>51346</td><td>1 oz. tube</td></tr> <tr><td></td><td>51243</td><td>8 oz. brush-top can</td></tr> <tr><td></td><td>51269</td><td>1 lb. brush-top can</td></tr> <tr><td></td><td>51246</td><td>2 lb. can</td></tr> <tr><td></td><td>51245</td><td>8 lb. can</td></tr> </table>	Item #	51346	1 oz. tube		51243	8 oz. brush-top can		51269	1 lb. brush-top can		51246	2 lb. can		51245	8 lb. can	<table border="0"> <tr><td>Item #</td><td>34395</td><td>8 oz. brush-top can</td></tr> <tr><td></td><td>34026</td><td>16 oz. brush-top can</td></tr> </table> <p style="text-align: right;"><b>METAL-FREE</b></p>	Item #	34395	8 oz. brush-top can		34026	16 oz. brush-top can	<table border="0"> <tr><td>Item #</td><td>51050</td><td>12 oz. net wt. aerosol</td></tr> <tr><td></td><td>51048</td><td>8 oz. brush-top can</td></tr> <tr><td></td><td>51049</td><td>1 lb. brush-top can</td></tr> <tr><td></td><td>51145</td><td>15 lb. can</td></tr> </table> <p style="text-align: right;"><b>METAL-FREE</b></p>	Item #	51050	12 oz. net wt. aerosol		51048	8 oz. brush-top can		51049	1 lb. brush-top can		51145	15 lb. can
Item #	51299	2 g pouch																																																																																											
	51277	7 g pouch																																																																																											
	51001	1 oz. tube																																																																																											
	51002	4 oz. tube																																																																																											
	51144	4 oz. brush-top can																																																																																											
	51147	8 oz. brush-top can																																																																																											
	51005	10 oz. brush-top can																																																																																											
	51003	12 oz. net wt. aerosol																																																																																											
	51004	13 oz. cartridge																																																																																											
	51006	1 lb. can																																																																																											
	51007	1 lb. brush-top can																																																																																											
	39643	1 lb. brush-top metal can																																																																																											
	51008	2.5 lb. can																																																																																											
	51009	8 lb. can																																																																																											
	38584	25 lb. pail																																																																																											
	51011	42 lb. pail																																																																																											
	51146	425 lb. drum																																																																																											
	37229	20 g stick – QuickStix™																																																																																											
	39222	40 g stick – QuickStix™																																																																																											
Item #	51346	1 oz. tube																																																																																											
	51243	8 oz. brush-top can																																																																																											
	51269	1 lb. brush-top can																																																																																											
	51246	2 lb. can																																																																																											
	51245	8 lb. can																																																																																											
Item #	34395	8 oz. brush-top can																																																																																											
	34026	16 oz. brush-top can																																																																																											
Item #	51050	12 oz. net wt. aerosol																																																																																											
	51048	8 oz. brush-top can																																																																																											
	51049	1 lb. brush-top can																																																																																											
	51145	15 lb. can																																																																																											
<b>UP TO 2000°F</b>	<b>UP TO 2400°F / HIGH LUBRICITY</b>	<b>Incidental Food Contact</b>	<b>Stainless Steel and Titanium</b>																																																																																										
<b>Loctite® White Hi-Temp Anti-Seize</b>	<b>Loctite® High Performance N-5000™ High Purity Anti-Seize</b>	<b>Loctite® Food Grade Anti-Seize</b>	<b>Loctite® Heavy-Duty Anti-Seize &amp; Loctite® QuickStix™ Heavy Duty Anti-Seize</b>																																																																																										
<table border="0"> <tr><td>Item #</td><td>34517</td><td>8 oz. brush-top can</td></tr> <tr><td></td><td>34518</td><td>16 oz. brush-top can</td></tr> </table> <p style="text-align: right;"><b>METAL-FREE</b></p>	Item #	34517	8 oz. brush-top can		34518	16 oz. brush-top can	<table border="0"> <tr><td>Item #</td><td>51572</td><td>1 lb. brush-top can</td></tr> </table>	Item #	51572	1 lb. brush-top can	<table border="0"> <tr><td>Item #</td><td>1167237</td><td>8 oz. brush-top can</td></tr> <tr><td></td><td>1169241</td><td>2 lb. can</td></tr> <tr><td></td><td>1170163</td><td>40 lb. pail</td></tr> </table> <p style="text-align: right;"><b>METAL-FREE</b></p>	Item #	1167237	8 oz. brush-top can		1169241	2 lb. can		1170163	40 lb. pail	<table border="0"> <tr><td>Item #</td><td>51609</td><td>1 oz. tube</td></tr> <tr><td></td><td>51605</td><td>9 oz. brush-top can</td></tr> <tr><td></td><td>51606</td><td>1.2 lb. brush-top can</td></tr> <tr><td></td><td>51607</td><td>2.3 lb. can</td></tr> <tr><td></td><td>51608</td><td>45 lb. pail</td></tr> <tr><td></td><td>41205</td><td>20 g stick – QuickStix™</td></tr> </table> <p style="text-align: right;"><b>METAL-FREE</b></p>	Item #	51609	1 oz. tube		51605	9 oz. brush-top can		51606	1.2 lb. brush-top can		51607	2.3 lb. can		51608	45 lb. pail		41205	20 g stick – QuickStix™																																																						
Item #	34517	8 oz. brush-top can																																																																																											
	34518	16 oz. brush-top can																																																																																											
Item #	51572	1 lb. brush-top can																																																																																											
Item #	1167237	8 oz. brush-top can																																																																																											
	1169241	2 lb. can																																																																																											
	1170163	40 lb. pail																																																																																											
Item #	51609	1 oz. tube																																																																																											
	51605	9 oz. brush-top can																																																																																											
	51606	1.2 lb. brush-top can																																																																																											
	51607	2.3 lb. can																																																																																											
	51608	45 lb. pail																																																																																											
	41205	20 g stick – QuickStix™																																																																																											
<b>UP TO 2400°F</b>	<b>UP TO 2400°F / HIGH PURITY</b>																																																																																												
<b>Loctite® Nickel Anti-Seize</b>	<b>Loctite® High Performance N-7000™ High Purity Anti-Seize</b>																																																																																												
<table border="0"> <tr><td>Item #</td><td>77124</td><td>8 oz. brush-top can</td></tr> <tr><td></td><td>51286</td><td>12 oz. net wt. aerosol</td></tr> <tr><td></td><td>51102</td><td>1 lb. can</td></tr> <tr><td></td><td>77164</td><td>1 lb. brush-top can</td></tr> <tr><td></td><td>51152</td><td>8 lb. can</td></tr> <tr><td></td><td>77175</td><td>5 gal. pail</td></tr> </table>	Item #	77124	8 oz. brush-top can		51286	12 oz. net wt. aerosol		51102	1 lb. can		77164	1 lb. brush-top can		51152	8 lb. can		77175	5 gal. pail	<table border="0"> <tr><td>Item #</td><td>51272</td><td>8 oz. brush-top can</td></tr> <tr><td></td><td>51270</td><td>1 lb. brush-top can</td></tr> <tr><td></td><td>51273</td><td>2 lb. can</td></tr> </table> <p style="text-align: right;"><b>METAL-FREE</b></p>	Item #	51272	8 oz. brush-top can		51270	1 lb. brush-top can		51273	2 lb. can																																																																	
Item #	77124	8 oz. brush-top can																																																																																											
	51286	12 oz. net wt. aerosol																																																																																											
	51102	1 lb. can																																																																																											
	77164	1 lb. brush-top can																																																																																											
	51152	8 lb. can																																																																																											
	77175	5 gal. pail																																																																																											
Item #	51272	8 oz. brush-top can																																																																																											
	51270	1 lb. brush-top can																																																																																											
	51273	2 lb. can																																																																																											
<b>ELECTRICALLY CONDUCTIVE</b>																																																																																													
<b>Loctite® Graphite-50™ Anti-Seize</b>																																																																																													
<table border="0"> <tr><td>Item #</td><td>51084</td><td>1 lb. can</td></tr> </table> <p style="text-align: right;"><b>METAL-FREE</b></p>	Item #	51084	1 lb. can																																																																																										
Item #	51084	1 lb. can																																																																																											

### [ Anti-Seize ]

Loctite® anti-seize products provide protection against rust, corrosion, seizing and galling, as well as lubrication. Anti-seizes are typically the products of choice for high temperature applications because of their unique ability to provide protection in extreme temperature conditions. Each product contains a combination of solid lubricating agents resulting in different high temperature limits and lubricities. These are the two major factors in choosing the right anti-seize product for your application.

### METAL-FREE

The “Metal-Free” products utilize nonmetallic fillers to achieve high temperature resistance properties as well as lubricity. These fillers typically provide a much higher temperature resistance than that of metallic fillers and, due to the less abrasive nature of these fillers, they also typically provide lower K-values, resulting in higher lubricity.

Loctite® Adhesives and Sealants Product Specialists are available to assist you. For application assistance, call **1-800-LOCTITE (562-8483)**; *within Canada, call 1-800-263-5043*; or, contact us through the web at [www.henkelna.com/loctite](http://www.henkelna.com/loctite).

**STRAIGHT FROM** *The Source*

## Your Source for LUBRICATING ANTI-SEIZE

- Utilizes the superior wear properties of ceramic and the convenience of two-part epoxies to protect equipment like pumps, chutes and augers in harsh industrial environments
- Stand up to almost any corrosion, abrasion and wear problem you can encounter
- Ideal for all those large-scale repairs that have to last
- Available in trowelable and brushable formulations with special fillers for tough conditions



### [ General-Purpose ]

Source's PICK

#### Loctite® C5-A® Copper Anti-Seize Lubricant

Exclusive formula suspends copper and graphite in a high quality grease. Protects metal parts from rust, corrosion, galling and seizing at temperatures to 1800°F (982°C).

Item.#	51299	2 g pouch
	51277	7 g pouch
	51001	1 oz. tube
	51002	4 oz. tube
	51144	4 oz. brush-top can
	51147	8 oz. brush-top can
	51005	10 oz. brush-top can
	51003	12 oz. net wt. aerosol
	51004	13 oz. cartridge
	51006	1 lb. can
	51007	1 lb. brush-top can
	39643	1 lb. brush-top metal can
	51008	2.5 lb. can
	51009	8 lb. can
	38584	25 lb. pail
	51011	42 lb. pail
	51146	425 lb. drum

#### Loctite® Silver Grade Anti-Seize

Heavy-duty, temperature-resistant, petroleum-based lubricant compound fortified with graphite and metallic flake. Inert; will not evaporate or harden in extreme cold or heat. For use in assemblies up to 1600°F (871°C).

Item.#	38181	7 g pouch
	80209	4 oz. brush-top can
	76732	8 oz. brush-top can
	76759	12 oz. net wt. aerosol
	76764	1 lb. brush-top can
	80206	1 gallon can
	76775	5 gallon pail

#### Loctite® Nickel Anti-Seize

Copper-free. Recommended for stainless steel and other metal fittings. For preventing corrosion, seizing and galling in harsh chemical environments and temperatures to 2400°F (1315°C).

Item.#	77124	8 oz. brush-top can
	51286	12 oz. net wt. aerosol
	51102	1 lb. can
	77164	1 lb. brush-top can
	51152	8 lb. can
	77175	5 gallon pail

#### Loctite® QuickStix™ C5-A® Copper Anti-Seize

The same trusted performance characteristics as the Loctite® C5-A® Copper Anti-Seize paste in a convenient semisolid stick form. Stick package offers more portability and less mess.

Item.#	37229	20 g stick
	39222	40 g stick

#### Loctite® QuickStix™ Silver Grade Anti-Seize

New semisolid stick offers the same performance characteristics as the Loctite® Silver Grade Anti-Seize paste in a convenient semisolid stick form. Stick package offers more portability and less mess.

Item.#	37230	20 g stick
	39223	40 g stick

### [ High Performance ]

Source's PICK

#### Loctite® Heavy-Duty Anti-Seize

Excellent lubricity. Metal-free formulation provides outstanding lubrication to all metals including stainless steel aluminum, and soft metals up to 2400°F (1315°C).

Item.#	51609	1 oz. tube
	51605	9 oz. brush-top can
	51606	1.2 lb. brush-top can
	51607	2.3 lb. can
	51608	45 lb. pail

#### Loctite® QuickStix™ Heavy Duty Anti-Seize

New semisolid stick offers the same performance characteristics as the Loctite® Heavy Duty Anti-Seize paste in a convenient semisolid stick form. Stick package offers more portability and less mess.

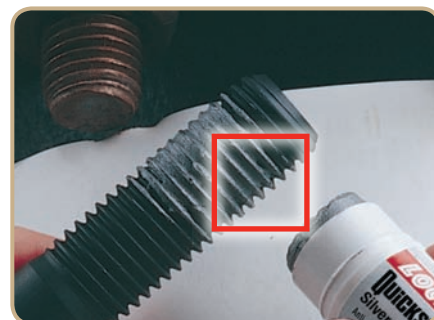
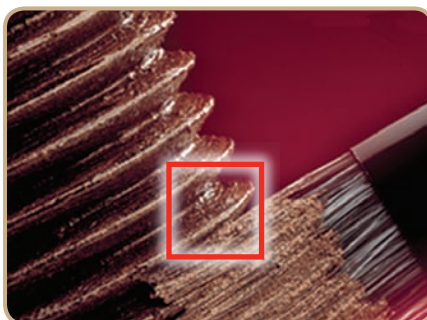
Item.#	41205	20 g stick
--------	-------	------------

#### Loctite® Marine Grade Anti-Seize

Metal-free formulation to protect assemblies exposed directly or indirectly to fresh and salt water, Loctite® Marine Grade Anti-Seize works especially well in high humidity conditions. It has excellent lubricity, superior water-washout and water spray resistance and prevents galvanic corrosion. Protects in temperatures from -20°F to 2400°F (-29°C to 1315°C).

Item.#	34395	8 oz. brush-top can
	34026	16 oz. brush-top can

## Sources REVEALED



## [ Applications ]

- Pump
- Gearbox
- Concrete Repair
- Conveyor Systems
- Shaft Repair

## [ Industries ]

- Mining
- Wastewater
- Power Generation

- Food Processing
- Pulp and Paper
- Beverage

APPLICATIONS  
& INDUSTRIES**Loctite® White Hi-Temp  
Anti-Seize**

Metal-free, general purpose, nonmetallic formulation that protects against high temperature seizing and galling of mated metal parts up to 2000°F (1093°C). White in color, it has excellent lubricity and can be used on various metals such as copper, brass, cast iron, steel, and all alloys including stainless steel.

Item # 34517 8 oz. brush-top can  
34518 16 oz. brush-top can

## [ Specialty ]

**Loctite® Food Grade Anti-Seize**

Metal-free formulation prevents seizure, galling, and friction in stainless steel and other metal parts up to 750°F (400°C).

Item # 1167237 8 oz. brush-top can  
1169241 2 lb. can  
1170163 40 lb. pail

**Loctite® Graphite-50™ Anti-Seize**

Metal-free, electrically conductive, non-metallic. Temperature resistant up to 900°F (482°C). Highly electrically conductive in metal-to-metal joints.

Item # 51084 1 lb. can

**Loctite® Moly Paste**

Metal-free, very low friction. Lubricates press fits, protects during break-in and under high static loads up to 750°F (400°C). Allows maximum clamping from available torque.

Item # 51050 12 oz. net wt. aerosol  
51048 8 oz. brush-top can  
51049 1 lb. brush-top can  
51145 15 lb. can

**Loctite® Moly-50™ Anti-Seize**

Metal-free, general-purpose thread lubricant. Temperature resistant to 750°F (400°C). Provides excellent lubricity.

Item # 51094 1 lb. can

**Loctite® Zinc Anti-Seize**

Protects aluminum and ferrous surfaces from seizure and corrosion up to 750°F (400°C).

Item # 39901 1 lb. can

## [ High Purity ]

**Loctite® N-7000™ High  
Purity Anti-Seize**

Metal-free formulation provides high levels of purity and excellent lubricating properties. For Class 1, 2 and 3 power plant hardware. Temperature resistant to 2400°F (1315°C).

Item # 51272 8 oz. brush-top can  
51270 1 lb. brush-top can  
51273 2 lb. can

**Loctite® N-5000™ High  
Purity Anti-Seize**

Nickel-based. Lubricates and protects Class 1, 2 and 3 power plant hardware. Recommended for highly corrosive environments to 2400°F (1315°C).

Item # 51346 1 oz. tube  
51243 8 oz. brush-top can  
51269 1 lb. brush-top can  
51246 2 lb. can  
51245 8 lb. can

**Loctite® High Performance  
N-5000™ High Purity Anti-Seize**

Maximum lubricating and anti-seize properties for Class 1, 2 and 3 power plant hardware. Temperature resistant to 2400°F (1315°C).

Item # 51572 1 lb. brush-top can

**Loctite® N-1000™ High  
Purity Anti-Seize**

Certified pure. Copper-based. Suitable for critical, long-term, stainless steel applications and high-nickel, alloy bolting. Recommended for protecting Class 2 and 3 power plant hardware. Temperature resistant to 1800°F (982°C).

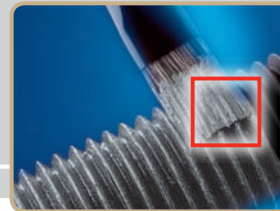
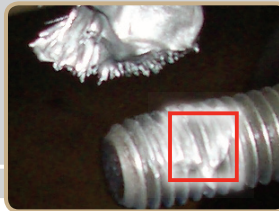
Item # 51115 8 oz. brush-top can  
51116 1 lb. can  
51117 2 lb. can

## ANTI-SEIZE IS OFTEN USED...

- As a gasket release agent in instances where reuse of the gasket is desirable
- Recommended for use on spark plug threads and electrical connections

HELPFUL HINTS

Your Source for **LUBRICATING ANTI-SEIZE**



[ Loctite® Anti-Seize Properties Chart ]

	LOCTITE® PRODUCT	ITEM NUMBER	PACKAGE TYPE/SIZE	TEMPERATURE RESISTANCE	COLOR	K-VALUE*	
GENERAL-PURPOSE	<b>C5-A® COPPER ANTI-SEIZE LUBRICANT</b>	51299	2 g pouch	1800°F (982°C)	Copper	0.16	
		51277	7 g pouch				
		51001	1 oz. tube				
		51002	4 oz. tube				
		51144	4 oz. brush-top can				
		51147	8 oz. brush-top can				
		51005	10 oz. brush-top can				
		51003	12 oz. net wt. aerosol				
		51004	13 oz. cartridge				
		51006	1 lb. can				
51007	1 lb. brush-top can						
39643	1 lb. brush-top metal can						
51008	2.5 lb. can						
51009	8 lb. can						
38584	25 lb. pail						
51011	42 lb. pail						
51146	425 lb. drum						
	<b>QUICKSTIX™ C5-A® COPPER ANTI-SEIZE</b>	37229	20 g stick				
		39222	40 g stick				
	<b>SILVER GRADE ANTI-SEIZE</b>	38181	7 g pouch	1600°F (871°C)	Silver	0.18	
		80209	4 oz. brush-top can				
		76732	8 oz. brush-top can				
		76759	12 oz. net wt. aerosol				
76764	1 lb. brush-top can						
80206	1 gallon can						
76775	5 gallon pail						
	<b>QUICKSTIX™ SILVER GRADE ANTI-SEIZE</b>	37230	20 g stick				
		39223	40 g stick				
	<b>NICKEL ANTI-SEIZE</b>	77124	8 oz. brush-top can	2400°F (1315°C)	Silver	0.13	
		51286	12 oz. net wt. aerosol				
		51102	1 lb. can				
		77164	1 lb. brush-top can				
		51152	8 lb. can				
		77175	5 gallon pail				
HIGH PERFORMANCE	<b>HEAVY DUTY ANTI-SEIZE</b>	51609	1 oz. tube	2400°F (1315°C)	Black	0.16	
		51605	9 oz. brush-top can				
		51606	1.2 lb. brush-top can				
		51607	2.3 lb. can				
		51608	45 lb. pail				
	<b>QUICKSTIX™ HEAVY DUTY ANTI-SEIZE</b>	41205	20 g stick				
	<b>MARINE GRADE ANTI-SEIZE</b>	34395	8 oz. brush-top can	2400°F (1315°C)	Black	0.18	
		34026	16 oz. brush-top can				
	<b>WHITE HI-TEMP ANTI-SEIZE</b>	34517	8 oz. brush-top can	2000°F (1093°C)	White	0.16	
		34518	16 oz. brush-top can				
SPECIALTY	<b>FOOD GRADE ANTI-SEIZE</b>	1167237	8 oz. brush-top can	750°F (400°C)	White	0.13	
		1169241	2 lb. can				
		1170163	40 lb. pail				
		<b>GRAPHITE-50™ ANTI-SEIZE</b>	51084	1 lb. can	900°F (482°C)	Black	0.13
		<b>MOLY PASTE</b>	51050	12 oz. net wt. aerosol	750°F (400°C)	Black	0.11
	51048		8 oz. brush-top can				
51049	1 lb. brush-top can						
51145	15 lb. can						
	<b>MOLY-50™ ANTI-SEIZE</b>	51094	1 lb. can	750°F (400°C)	Black	0.13	
	<b>ZINC ANTI-SEIZE</b>	39901	1 lb. can	750°F (400°C)	Grey	0.15	
HIGH PURITY	<b>N-7000™ HIGH PURITY ANTI-SEIZE</b>	51272	8 oz. brush-top can	2400°F (1315°C)	Silver	0.16	
		51270	1 lb. brush-top can				
		51273	2 lb. can				
		<b>N-5000™ HIGH PURITY ANTI-SEIZE</b>	51346	1 oz. tube	2400°F (1315°C)	Silver	0.15
	51243		8 oz. brush-top can				
51269	1 lb. brush-top can						
51246	2 lb. can						
51245	8 lb. can						
	<b>HIGH PERFORMANCE N-5000™ HIGH PURITY ANTI-SEIZE</b>	51572	1 lb. brush-top can	2400°F (1315°C)	Silver	0.15	
	<b>N-1000™ HIGH PURITY ANTI-SEIZE</b>	51115	8 oz. brush-top can	1800°F (982°C)	Copper	0.17	
51116		1 lb. can					
51117		2 lb. can					

ITEMS IN RED = Source's PICK

\* See K-Value on next page.



**Loctite® Industrial Hand Wipes**

Clean hands anywhere! Quick and easy to use – no rinsing, drying or residue. Each 9 1/2 in. x 12 in. towel is pre-moistened with powerful citrus-scented cleaning formula. Towels are abrasive enough to scrub off the toughest grease and grime.



Item # 34943 75 count  
34944 130 count

ADDITIONAL RESOURCES

[ Loctite® Anti-Seize Application Chart ]

	LOCTITE® PRODUCT	MAXIMUM ANTI-SEIZE PROPERTIES	FOR MAXIMUM LUBRICITY	FOR LOW SPEEDS, HIGH LOADS	EXTREME HIGH TEMPERATURE RESISTANCE (TO 2000°F-2400°F)	EXTREME CHEMICAL RESISTANCE	ELECTRICALLY CONDUCTIVE	FOR ALUMINUM/ SOFT METALS	FOR STAINLESS STEEL	METAL-FREE FORMULATION	COPPER-FREE FORMULATION	KEY SPECIFICATIONS & AGENCY APPROVALS
GENERAL-PURPOSE	<b>C5-A° COPPER ANTI-SEIZE LUBRICANT</b>	△					△	△	△			CFIA (QuickStix™)
	SILVER GRADE ANTI-SEIZE	△					△	△	△			ABS, CFIA
	NICKEL ANTI-SEIZE	△			▲	▲	△		△		▲	ABS
HIGH PERFORMANCE	<b>HEAVY-DUTY ANTI-SEIZE</b>	▲			▲	△	△	△	▲	▲	▲	N/A
	MARINE GRADE ANTI-SEIZE	▲			▲			△	▲	▲	▲	ABS
	WHITE HI-TEMP ANTI-SEIZE	△			▲			△	△	▲	▲	N/A
SPECIALTY	<b>FOOD GRADE ANTI-SEIZE</b>	■						△		▲	▲	NSF H1, CFIA
	GRAPHITE-50™ ANTI-SEIZE	■				△	▲	△		▲	▲	N/A
	<b>MOLY PASTE</b>	■	▲	▲					▲	▲	▲	N/A
	MOLY-50™ ANTI-SEIZE	■	△	△					▲	▲	▲	MIL-PRF-83483
	ZINC ANTI-SEIZE	■					■	▲	△			N/A
HIGH PURITY	<b>N-7000™ HIGH PURITY ANTI-SEIZE</b>	▲			▲	△	△		△	▲	▲	N/A
	N-5000™ HIGH PURITY ANTI-SEIZE	△			▲	▲	△		△		▲	N/A
	HIGH PERFORMANCE N-5000™ HIGH PURITY ANTI-SEIZE	▲	▲		▲	▲	△		△		▲	N/A
	N-1000™ HIGH PURITY ANTI-SEIZE	△					△		△			N/A

ITEMS IN RED = Source's PICK    △ Good Choice    ▲ Preferred Choice    ■ Acceptable Choice



**Torque Guide**

Proper clamp load is an essential part of any bolted assembly for trouble-free operations. Torquing either nut or bolt creates the clamp load. An anti-seize lubricant used on a bolt helps to develop greater clamp load for the same torque compared to a non-lubricated bolt. An additional benefit is greater uniformity in clamp load among a series of bolts. The relationship between torque and clamp load is expressed in the following equation: T = KFD.

Where:

T = Torque (in.-lb., ft.-lb., N-m)

F = Clamp Load (lb., N)

D = Nominal diameter of bolt (in., ft., m)

K = Torque coefficient or nut factor, determined experimentally

**K Factors:** K factors are obtained on Grade 8, 1/2 in. steel bolts and grade 5 nuts by a test procedure that measures torque tension properties. Lubricant was applied to the bolt threads and both faces of the washer.

See the Properties Chart for the torque coefficient or K value for the anti-seize compounds.

Henkel Corporation believes that this data fairly represents performance to be expected. However, Henkel makes no warranty of specific performance on any individual fastener. In critical applications, it is necessary to determine K values independently.

Note: There are two "coefficients" used to express the relationship between torque and tension: torque coefficient (also called "nut factor") is the most commonly used. A different concept is the "friction coefficient," which has a value of 2/3 (or 67%) of the torque coefficient.

ADDITIONAL RESOURCES

## Your Source for LUBRICATING LUBRICANTS



### [ Synthetic / High Performance ]

#### Loctite® ViperLube® High Performance Synthetic Grease

NLGI grade 2/severe duty GC-LB grease provides superior protection for equipment exposed to a wide range of operating temperatures and environments. Use as a lubricant and protective anti-rust film on bearings, machine parts, equipment, or as a release agent on gaskets and seals. *NSF H1 rated for incidental food contact.*

Item #	36780	1 cc tube
	36781	3 oz. tube
	36782	14 oz. cartridge
	36783	400 g can
	36784	0.42 oz. tube
	36786	10.1 oz. net wt. aerosol
	37061	30 lb. pail
	37710	120 lb. drum
	39146	55 gallon drum

#### Loctite® ViperLube® Clear High Performance Synthetic Grease

Lasts four times longer than petroleum-based lubricants. Withstands temperatures up to 420°F (520°F intermittent). Contains PTFE for added protection against friction and wear. Nonflammable. Contains no ozone-depleting compounds. *NLGI #2 grade grease. Opaque white in color.*

Item #	39341	3 oz. tube
	39342	400 g cartridge

### [ Petroleum-Based Greases ]

#### Loctite® White Lithium Grease

General-purpose lubricating paste for metal-to-metal and metal-to-plastic applications. Provides corrosion protection. Contains no ozone-depleting compounds.

Item #	30530	1.5 oz. tube
	30543	10.75 oz. net wt. aerosol

#### Loctite® Dielectric Grease

Provides a moisture-proof barrier that lubricates and protects electrical equipment from salt, dirt and corrosion. High dielectric strength. Good thermal, oxidation and chemical stability.

Item #	30536	0.33 oz. tube
	37535	3 oz. tube

#### Loctite® Extreme Pressure Grease

Lubricates gears, bearings, and slides up to 450°F (232°C). NLGI Grade 1 rated. Withstands extremes of pressure and resists water-washout. Maintains pumpability at low temperatures; will not take a hard set after cooling.

Item #	51242	14.5 oz. cartridge
--------	-------	--------------------

#### Loctite® Hydraulic Jack Oil

Noncorrosive oil improves lubrication in all types of hydraulic units (except hydraulic brakes). Contains antioxidant, anti-rust and anti-wear additives.

Item #	30523	1 gallon can
--------	-------	--------------

#### Loctite® Food Grade Grease

Extreme pressure grease with temperature resistance to 450°F (232°C). NLGI Grade 2 rated. Protects after flush-outs and steam cleaning. *NSF H1 rated for incidental food contact. CFIA approved.*

Item #	51252	14.5 oz. cartridge
--------	-------	--------------------

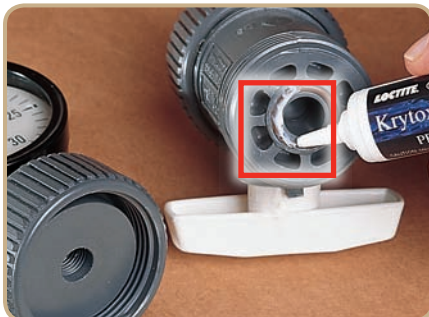
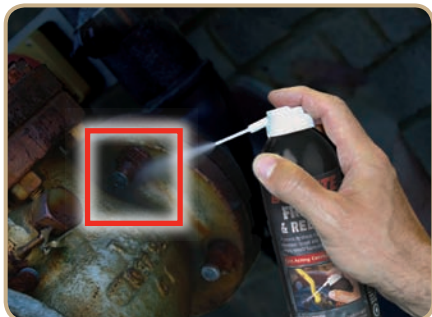
#### Loctite® Maintain® Lubricant Penetrant

##### MOISTURE DISPLACER AND RUST PREVENTER

Spray-on rust preventative for all metal parts. Unfreezes rusted parts; displaces and seals out moisture. For use on steel, aluminum, brass, copper, magnesium, and other metals and alloys. Contains no ozone-depleting compounds. *CFIA approved.*

Item #	81204	16 oz. net wt. aerosol
--------	-------	------------------------

## Sources REVEALED



### [ Applications ]

- Pump
- Gearbox
- Concrete Repair
- Conveyor Systems
- Shaft Repair

### [ Industries ]

- Mining
- Wastewater
- Power Generation

- Food Processing
- Pulp and Paper
- Beverage

APPLICATIONS  
& INDUSTRIES

### [ Specialty Oils & Lubricants ]

#### Krytox® RFE PFPE Lubricant and High Performance Lubricant

This grease lubricant has excellent lubrication properties over a broad temperature range, will not cause cracking or swelling, and contains a corrosion inhibitor to protect against undue wear. Eliminates sticking and aids in disassembly. Nonflammable, chemically inert. Compatible with chlorine. Specially formulated high performance lubricant designed to provide long-lasting lubrication for all types of moving and/or sliding parts. See product description sheet for test results.

Item #	29710	2 oz. tube
	31361	16 oz. cartridge
	29711 High Performance	2 oz. tube
	29709 High Performance	16 oz. cartridge

#### Krytox® RFE Advanced PTFE Dry Lubricant

A high performance, synthetic lubricant designed to provide long-lasting lubrication for parts that require a dry, thin lubricating film. This lubricant provides excellent lubrication properties over a broad temperature range, and dries to the touch in 60 seconds. It is non-oily, non-staining, non-migrating and will not attract dirt or dust.

Item #	30138	8 oz. net wt. aerosol
--------	-------	-----------------------

#### Loctite® Gear, Chain and Cable Lubricant

Protects and prolongs the life of gears, chains, wire rope and cable. Repels dirt, sand and dust with minimal “throw-off” from centrifugal force. Contains no ozone-depleting compounds.

Item #	81251	12 oz. net wt. aerosol
--------	-------	------------------------

#### Loctite® Silicone Lubricant

Multipurpose lubricant stops sticking, friction, squeaking and binding of moving parts. Non-gumming. Will not mar paint, rubber or plastic surfaces. Waterproofs and electrically insulates. *CFIA approved.*

Item #	51360	150 g tube
	81246	13 oz. net wt. aerosol

#### Loctite® Moly Dry Film Lubricant

Solid film lubricant for sliding surfaces and slow moving parts. Temperature resistant up to 750°F (400°C) as a dry film lubricant, and 2400°F (1315°C) as an anti-seize. Won't squeeze out, burn off or pick up dirt.

Item #	39895	12 oz. net wt. aerosol
	39896	1.3 lb. can
	39897	10 lb. can

#### Loctite® Solvo-Rust® Super Penetrating Oil

Frees rusted parts and keeps them lubricated and protected from rust after use. May be applied on or near moving parts. Will not harm painted surfaces. Contains no ozone-depleting compounds. *CFIA approved.*

Item #	81252	12.25 oz. net wt. aerosol
--------	-------	---------------------------

#### Loctite® C-200® High Temperature Solid Film Lubricant

Solid film protection for engine parts, bearings and servo-mechanisms. Temperature resistant up to 750°F (400°C) as a dry film lubricant, and 2400°F (1315°C) as an anti-seize.

Item #	39893	1.3 lb. can
	39894	10 lb. can

#### Loctite® Penetrating Oil

Penetrates, lubricates and displaces moisture. Protects against rust and corrosion. Contains no ozone-depleting compounds.

Item #	51221	12 oz. net wt. aerosol
--------	-------	------------------------

#### Loctite® Freeze & Release

##### FAST-ACTING CORROSION RELEASE

Instantly chills seized and rusted parts (bolts, nuts, studs) down to -45°F (-43°C). The exceptional shock-freeze action causes microscopic cracks in the layer of rust, allowing the lubricating ingredient to wick directly into the rust by capillary action.

Item #	996456	13.52 oz. net wt. aerosol
--------	--------	---------------------------

Your Source for **LUBRICATING LUBRICANTS**



[ Loctite® ViperLube® Synthetic Lubricants Properties Chart ]

LOCTITE® PRODUCT	ITEM NUMBER	PACKAGE TYPE/SIZE	TEMPERATURE RESISTANCE	TYPE OF LUBRICANT	VISCOSITY RANGE	POUR POINT (ASTM D 97)	FOUR BALL TEST	NLGI RATING	DROP POINT	SPRAY TEST (ASTM B111)	AGENCY APPROVALS
SYNTHETIC / HIGH PERFORMANCE VIPERLUBE® HIGH PERFORMANCE SYNTHETIC GREASE	36780	1 cc tube	400°F (204°C) continuous	Synthetic hydrocarbon (polyalphaolefin based)	240 CST	N/A	0.45 mm (ASTM D 2266)	2	500°F (260°C) (ASTM D 556)	Pass	NSF H1, CFIA
	36781	3 oz. tube									
	36782	14 oz. cartridge									
	36783	400 g can									
	36784	0.42 oz. tube									
	36786	10.1 oz. net wt. aerosol									
	37710	120 lb. drum									
39146	55 gallon drum	500°F (260°C) intermittent									
VIPERLUBE® CLEAR HIGH PERFORMANCE SYNTHETIC GREASE	39341 39342	3 oz. tube 400 g cartridge	420°F (216°C) continuous 520°F (271°C) intermittent	Synthetic hydrocarbon (polyalphaolefin based)	N/A	N/A	0-60 mm (ASTM D 2266)	2	<590°F (<310°C) (ASTM D 2265)	N/A	NSF H1, CFIA

[ Grease Compatibility Chart ]

THICKENER TYPE	CALCIUM SULFONATE VIPERLUBE®	SILICA GEL VIPERLUBE® CLEAR	LITHIUM SOAP	LITHIUM COMPLEX	ALUMINUM COMPLEX	CALCIUM COMPLEX	BARIUM SOAP	SODIUM SOAP	BENTONE	POLYUREA
CALCIUM SULFONATE VIPERLUBE®		SC	FC	FC	NC	FC	SC	NC	NC	NC
SILICA GEL VIPERLUBE® CLEAR	SC		FC	FC	FC	NC	FC	NC	FC	NA
LITHIUM SOAP	FC	FC		FC	NC	FC	SC	NC	NC	SC
LITHIUM COMPLEX	FC	FC	FC		NC	FC	SC	NC	NC	SC
ALUMINUM COMPLEX	NC	FC	NC	NC		NC	NC	SC	NC	NC
CALCIUM COMPLEX	FC	NC	FC	FC	NC		SC	NC	NC	SC
BARIUM SOAP	SC	FC	SC	SC	NC	SC		NC	NC	NA
SODIUM SOAP	NC	NC	NC	NC	SC	NC	NC		NC	NC
BENTONE	NC	FC	NC	NC	NC	NC	NC	NC		NC
POLYUREA	NC	NA	SC	SC	NC	SC	NA	NC	NC	

FC = Fully Compatible  
 NC = Not Compatible (Mixtures soften severely and do not remain grease-like.)  
 SC = Somewhat Compatible (Mixtures soften but remain grease-like.)  
 NA = Not Available

[ Krytox® RFE Lubricants Properties Chart ]

LOCTITE® PRODUCT	ITEM NUMBER	PACKAGE TYPE/SIZE	TEMPERATURE RESISTANCE	NON-FLAMMABLE	HIGH LOAD CAPACITY	CORROSION INHIBITORS	COMPATIBLE WITH ALL PLASTICS, METALS & ELASTOMERS	CHEMICALLY RESISTANT	OXYGEN COMPATIBLE*	THERMALLY STABLE	WATER/STREAM RESISTANT	NLGI GRADE
SPECIALTY OILS AND LUBRICANTS KRYTOX® RFE PFPE LUBRICANT (O-RING)	29710	2 oz. tube	-15°F to 500°F (-26°C to 260°C)	●	●		●	●	●	●	●	2
	31361	16 oz. cartridge										
	KRYTOX® RFE PFPE HIGH PERFORMANCE LUBRICANT	29711 29709	2 oz. tube 16 oz. cartridge	-15°F to 500°F (-26°C to 260°C)		●		●	●	●	●	2
KRYTOX® RFE ADVANCED PTFE DRY LUBRICANT	30138	8 oz. net wt. aerosol	-15°F to 500°F (-26°C to 260°C)	Once film is dry			●	●		●	Water-repellent	N/A

\* Per BAM 8104-411 & MSFC 106B under specific conditions. Test the proposed application thoroughly before use.

- Dry film lubricants are an ideal choice for “unclean” environments where there is potential for dirt and other contaminants to come in contact with the product. Contaminants will not stick like they would with a standard grease.
- Loctite® Maintain® Lubricant Penetrant is a moisture displacer, rust preventive and an excellent alternative to WD-40®.

HELPFUL HINTS

## [ Loctite® Lubricants Applications Chart ]

	LOCTITE® PRODUCT	ITEM NUMBER	PACKAGE TYPE/SIZE	TEMPERATURE RESISTANCE	FOOD PROCESSING EQUIPMENT	CLOSE-FITTING PARTS	HIGH TEMP	ELECTRICALLY CONDUCTIVE	ELECTRICAL EQUIPMENT	GEAR, BEARINGS, CABLE & CONVEYORS	HYDRAULIC UNITS (NOT BRAKES)	FOR HIGH SPEED BEARINGS	FOR LOW SPEEDS & HIGH LOADS	CHAIN-DRIVEN EQUIPMENT	SOLID FILM
SYNTHETIC / HIGH PERFORMANCE	VIPERLUBE® HIGH PERFORMANCE SYNTHETIC GREASE	36780 36781 36782 36783 36784 36786 37061 37710 39146	1 cc tube 3 oz. tube 14 oz. cartridge 400 g can 0.42 oz. tube 10.1 oz. net wt. aerosol 30 lb. pail 120 lb. drum 55 gallon drum	400°F (204°C) continuous 500°F (260°C) intermittent	▲	▲	▲	■	■	▲		▲	▲	▲	
	VIPERLUBE® CLEAR HIGH PERFORMANCE SYNTHETIC GREASE	39341 39342	3 oz. tube 400 g cartridge	420°F (216°C) continuous 520°F (271°C) intermittent	▲		▲		▲	▲		▲	▲	▲	
SPECIALTY OILS & LUBRICANTS	GEAR, CHAIN & CABLE LUBRICANT	81251	12 oz. net wt. aerosol	250°F (121°C)						▲				▲	
	SILICONE LUBRICANT	51360 81246	150 g tube 13 oz. net wt. aerosol	400°F (204°C)	▲		■			△				△	
	MOLY DRY FILM LUBRICANT	39895 39896 39897	12 oz. net wt. aerosol 1.3 lb. can 10 lb. can	750°F (400°C)			△	△	▲				△	▲	▲
	SOLVO RUST® SUPER PENETRATING OIL	81252	12.25 oz. net wt. aerosol	250°F (121°C)		△									
	C-200® HIGH TEMPERATURE SOLID FILM LUBRICANT (FOR UNCLEAN ENVIRONMENTS)	39893 39894	1.3 lb. can 10 lb. can	2400°F (1315°C)			▲	△					△		▲
	PENETRATING OIL	51221	12 oz. net wt. aerosol	100°F (38°C)		△									
	FREEZE & RELEASE	996456	13.52 oz. net wt. aerosol	N/A		△									
PETROLEUM-BASED GREASES	WHITE LITHIUM GREASE	30530 30543	1.5 oz. tube 10.75 oz. net wt. aerosol	380°F (193°C) (dropping point)						△			▲	△	
	DIELECTRIC GREASE	30536 37535	0.33 oz. tube 3 oz. tube	400°F (204°C)			■	■	■						
	EXTREME PRESSURE GREASE	51242	14.5 oz. cartridge	450°F (232°C)			■					▲	▲		
	HYDRAULIC JACK OIL	30523	1 gallon can	120°F (48°C)							▲				
	FOOD GRADE GREASE	51252	14.5 oz. cartridge	450°F (232°C)	▲		■					▲			
	MAINTAIN® LUBRICANT PENETRANT	81204	16 oz. net wt. aerosol	250°F (121°C)		▲			▲						

△ Good Choice    ▲ Preferred Choice    ■ Acceptable Choice

### CARTRIDGE ACCESSORIES

Go to [page 185](#) to see Loctite® branded cartridge accessories as well as other Loctite® Branded Consumables.

Can't find what you're looking for? Visit [www.equipment.loctite.com](http://www.equipment.loctite.com) or call 1-800-LOCTITE (562-8483).

**STRAIGHT FROM** *The Source*