

Your Source for
FLOORING & CONCRETE REPAIR



[Table of Contents]

FLOORING & CONCRETE REPAIR	63
ANTI-SLIP COATINGS	67
FLOOR SEALANTS & TOPCOATS	69
FLOORING, CONCRETE REPAIR & GROUTING	71

[Anti-Slip Coatings]

CHOOSING AN ANTI-SLIP COATING

When choosing an anti-slip coating, there are several factors to consider – the most important of which is profile size. A more aggressive profile will provide better traction and a higher coefficient of friction. A lower profile will provide a better walking surface and will be easier to clean, in addition to the anti-slip properties.

It is also important to consider the substrate that is being coated and the type of exposure the coating will endure. Information and charts on the following pages will help guide you through your selection process.

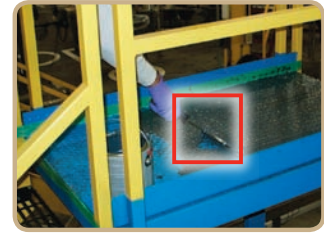
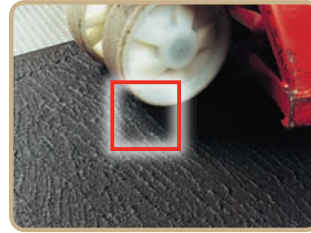
WHEN DO I NEED TO USE A PRIMER?

It is always recommended that a primer be used before applying an anti-slip coating. Primers increase adhesion to the substrate and also seal porosity when applied on concrete. The decision on which primer to use is based on the product being used and the substrate. The following chart will assist you in choosing the right primer for your application.

Your Source **ANTI-SLIP PRIMER GUIDE**

WHAT IS THE SURFACE OF THE SUBSTRATE?

Concrete/Porous Surface	Metal
<p>Loctite® Big Foot® Water-Based Primer/Sealer</p> <p><small>Item #</small> 94142 1 gallon kit</p> <p><small>Note:</small> For All Loctite® Big Foot® Products except Loctite® Big Foot® Acrylic Pedestrian Grade</p>	<p>Loctite® Big Foot® Metal Primer</p> <p><small>Item #</small> 96132 1 gallon kit</p> <p><small>Note:</small> For All Loctite® Big Foot® Products including Loctite® Big Foot® Acrylic Pedestrian Grade</p>
<p>Loctite® Big Foot® Acrylic Primer</p> <p><small>Item #</small> 95581 1 gallon pail</p> <p><small>Note:</small> For Loctite® Big Foot® Acrylic Pedestrian Grade and Flexible Low Profile</p>	



Your Source ANTI-SLIP COATINGS GUIDE

WHAT TYPE OF TRAFFIC DOES THE AREA CONTAIN?

Pedestrian		Vehicular	
LIGHT PEDESTRIAN TRAFFIC, ENHANCED CLEANABILITY	HEAVY PEDESTRIAN OR LIGHT ROLLING TRAFFIC	HEAVY ROLLING EQUIPMENT TRAFFIC	MOST AGGRESSIVE PROFILE AND ODOR-SENSITIVE AREAS
<p>Loctite® Big Foot® Low Pedestrian Profile Pedestrian Grade</p> <p>Item # 40352 1 gallon kit</p>	<p>Loctite® Big Foot® Heavy Duty Pedestrian Grade</p> <p>Item # Black 96211 1 gallon can Grey 96261 1 gallon can Grey 96265 5 gallon pail Yellow 40302 1 gallon can Yellow 40303 5 gallon pail</p>	<p>Loctite® Big Foot® Vehicular Grade</p> <p>Item # Black 96221 1 gallon kit Grey 96251 1 gallon kit Grey 96255 5 gallon kit</p>	<p>Loctite® Big Foot® Zero V.O.C.</p> <p>Item # Grey 39915 1 gallon kit Black 96231 1 gallon kit</p>
ASPHALT, OUTDOOR OR FLEXIBLE APPLICATIONS			
<p>Loctite® Big Foot® Acrylic Pedestrian Grade</p> <p>Item # Grey 95591 1 gallon pail Black 36045 1 gallon pail</p>			
BAREFOOT			
<p>Loctite® Big Foot® Flexible Low Profile Exterior Grade</p> <p>Item # Grey 1354766 1 gallon kit Black 1352349 1 gallon kit</p>			

Loctite® Adhesives and Sealants Product Specialists are available to assist you with new product designs, or to help you re-engineer an existing application for improved performance and cost savings. They can also set up testing of your parts at the Henkel Customer Engineering Center. For application assistance, call **1-800-LOCTITE (562-8483)**; *within Canada, call 1-800-263-5043*; or, contact us through the web at www.henkelna.com/loctite.

STRAIGHT FROM *The Source*

Your Source for
FLOORING & CONCRETE REPAIR



[FLOOR SEALANTS & TOPCOATS]

Easy to mix and use, Loctite® Fixmaster® floor coating systems offer the solutions needed to keep facilities looking good and performing great. These two- or three-part, pre-measured epoxy and urethane systems are non-shrinking and will bond to concrete without the use of special bonding agents. Available in multiple colors, these coatings offer high chemical resistance, and provide a hard wearing and durable surface.

Loctite® Adhesives and Sealants Product Specialists are available to assist you with new product designs, or to help you re-engineer an existing application for improved performance and cost savings. They can also set up testing of your parts at the Henkel Customer Engineering Center. For application assistance, call **1-800-LOCTITE (562-8483)**; *within Canada, call 1-800-263-5043*; or, contact us through the web at www.henkeln.com/loctite.

STRAIGHT FROM *The Source*

Your Source **TOPCOATS GUIDE**

WHAT IS THE SURFACE OF THE SUBSTRATE?

Industrial Wear

**Loctite® Fixmaster®
Self-Leveling Flooring Epoxy**

Item #	40332	Deck Grey	Complete 1 gallon kit
	40334	Haze Grey	Complete 1 gallon kit
	40342	Hardener	1.5 gallon Hardener
	40333	Deck Grey	3.5 gallon Resin*
	40335	Haze Grey	3.5 gallon Resin*
	40343	Additive	25 lb. bag high build additive – add to complete 5 gallon kit

* A Hardener must be added.

Your Source **PRIMERS / SEALERS GUIDE**

IS THE SURFACE MECHANICALLY PREPARED (ABRADED)?

No

**Loctite® Fixmaster®
Water-Based Epoxy Primer/Sealer**

Item #	40348	Complete	2 gallon kit
	40349	Must have Hardener	10 gallon Resin
	40351	Must have Resin	10 gallon Hardener

Yes

**Loctite® Fixmaster®
High Solids Floor Coating Primer**

Item #	40319	Clear	1 gallon kit
	40320	Clear Resin	3.5 gallon
	40321	Clear Hardener	1.5 gallon



[FLOORING, CONCRETE REPAIR & GROUTING]

Industrial floors require maintenance approximately every six months. Damage from day-to-day traffic, heavy load and chemical erosion can lead to a floor that needs a lot of work. Loctite® flooring and grouting products can address all of your floor repair needs and help you maintain a safe, efficient workplace.

When choosing a floor or concrete repair product, the important things to consider are substrate condition, traffic and chemical exposure, and time available to complete the repair. Information and charts on the following pages will help you choose a product

that will provide superior protection against the harshest environments or get your floor back in service in under an hour!

HOW IMPORTANT IS SURFACE PREPARATION?

A floor repair is only as good as the concrete or substrate to which it is adhering. It is important to check thoroughly for damaged or loose concrete, because a failure of the substrate below the repair would eventually degrade the integrity of the repair itself. Surface preparation is the most important aspect of any concrete or floor repair.

Your Source **FLOORING, CONCRETE REPAIR & GROUTING GUIDE**

WHAT TYPE OF APPLICATION IS NEEDED?

Concrete Repair		Grouting	
<p>General Floor Repair</p> <p>FAST CURE</p> <p>Loctite® Fixmaster® Magna-Crete</p> <p>Item # 95551 1 gallon kit 95555 5 gallon kit 40270 1 lb. tub – Winter Additive 40271 1 lb. tub – Summer Additive 1012500 1 lb., 12 oz. kit 831304 2475 lb. tote 976786 55 gallon drum – Activator</p> <p>HIGH STRENGTH</p> <p>Loctite® Fixmaster® Floor Fill</p> <p>Item # 99361 10 lb. kit 99365 40 lb. kit</p> <p>SMALL CRACK REPAIR</p> <p>Loctite® Fixmaster® Crack Filler</p> <p>Item # 40346 1 gallon kit</p> <p>Loctite® Fixmaster® Crack Filler SL</p> <p>Item # 1291113 8.6 oz. cartridge</p> <p>NON-SAG CRACK REPAIR</p> <p>Loctite® Fixmaster® Crack Filler NS</p> <p>Item # 1108886 8.6 oz. cartridge</p>	<p>Extreme Chemical Resistance</p> <p>Loctite® Fixmaster® High Performance Quartz</p> <p>Item # 96495 42 lb. kit</p> <p>Small Concrete Repairs</p> <p>Loctite® Fixmaster® Concrete Repair Epoxy</p> <p>Item # 39366 4 oz. stick</p> <p>Expansion Joints</p> <p>Loctite® Fixmaster® Flexible Joint Sealant</p> <p>Item # 40347 1 gallon kit</p>	<p>POURS UP TO 1 IN. DEEP</p> <p>Loctite® Fixmaster® Fast Set Grout</p> <p>Item # 1324134 2 gallon kit</p> <p>POURS UP TO 6 IN. DEEP</p> <p>Loctite® Fixmaster® Deep Pour Grout</p> <p>Item # 99545 5 gallon kit</p> <p>POURS UP TO 18 IN. DEEP</p> <p>Loctite® Fixmaster® Super Grout</p> <p>Item # 33510 5 gallon kit</p>	<p>MARINE APPLICATIONS</p> <p>Loctite® Fixmaster® Marine Chocking</p> <p>Item # Green 97572 2 gallon kit Orange 37316 1 gallon kit Orange 96102 2 gallon kit</p> <p>ANCHOR BOLT GROUT</p> <p>Loctite® Fixmaster® Anchor Bolt Grout HP</p> <p>Item # 1108757 8.6 oz. single cartridge 1108758 20.7 oz. dual cartridge</p>

Your Source for
FLOORING & CONCRETE REPAIR
ANTI-SLIP COATINGS

- Provide tough, long-lasting anti-skid surfaces for added safety
- Can be easily applied using Loctite® phenolic or bristle rollers to concrete, metal or wood surfaces
- Stand up to heavy traffic and harsh environments
- For maximum adhesion, use Loctite® Big Foot® primers



[Adhesives / Coatings]

Loctite® Big Foot® Low Profile Pedestrian Grade

A two-component coating that combines water-borne epoxy resins and tough, fine-grained abrasives to produce a self-sealing, non-slip floor and deck coating. Enhanced cleanability, chemical resistance and coverage are but a few of the reasons Loctite® Big Foot® Low Profile Pedestrian Grade is the first choice for low-profile applications.

Item # 40352 1 gallon kit

Loctite® Big Foot® Flexible Low Profile Exterior Grade

Single component, water based anti-slip coating. Designed for barefoot traffic in water prone areas. It is chip-, scuff- and impact-resistant, as well as UV-resistant and flexible. Ideal for recreation areas as well as industrial and institutional facilities.

Item # Grey 1354766 1 gallon kit
 Black 1352349 1 gallon kit

Loctite® Big Foot® Heavy Duty Pedestrian Grade

For areas with heavy pedestrian or light rolling traffic. Ideal for ramps, walkways, locker rooms, stairs and assembly areas. Now available in Safety Yellow.

Item # Black 96211 1 gallon can
 Grey 96261 1 gallon can
 Grey 96265 5 gallon can
 Yellow 40302 1 gallon can
 Yellow 40303 5 gallon can

Loctite® Big Foot® Vehicular Grade

Withstands even the heaviest rolling equipment traffic. Resists liquids as harsh as jet fuels and hydraulic fluids. Superior adhesion forms a solid bond to metal, concrete and wood.

Item # Black 96221 1 gallon kit
 Grey 96251 1 gallon kit
 Grey 96255 5 gallon kit

Loctite® Big Foot® Zero V.O.C.

This 100% reactive, solvent-free epoxy has the most aggressive profile in the Loctite® Big Foot® line. Use in odor-sensitive areas such as wineries, food processing plants, hospitals or for confined spaces.

Item # Grey 39915 1 gallon kit
 Black 96231 1 gallon kit

Loctite® Big Foot® Acrylic Pedestrian Grade

A single-component, elastomeric, anti-slip floor and deck coating or optimum adhesion to asphalt and flexible applications. UV-resistant.

Item # Grey 95591 1 gallon pail
 Black 36045 1 gallon pail

[Primers / Sealers]

Loctite® Big Foot® Metal Primer

Two-component, epoxy-polyamide primer increases adhesion between all Loctite® Big Foot® anti-slip coatings and metal surfaces, including acrylic.

Item # 96132 1 gallon kit

Loctite® Big Foot® Acrylic Primer

A single-component, clear, zero V.O.C., water-based primer designed for use with Loctite® Big Foot® Acrylic Pedestrian Grade.

Item # 95581 1 gallon pail

Loctite® Big Foot® Water-Based Primer/Sealer

Specially formulated to increase adhesion and coverage of all Loctite® Big Foot® anti-slip coatings except Loctite® Big Foot® Acrylic Pedestrian Grade. For use on concrete, wood, tile and other porous substrates.

Item # 94142 1 gallon kit

COATING ACCESSORIES

Loctite® Big Foot® Phenolic Roller Cores (Heavy Duty, Vehicular, Acrylic Pedestrian, Zero V.O.C.)

Use with Loctite® Big Foot® Heavy Duty Vehicular and Zero V.O.C. Grade Coatings.



Item # 96121 1 per case

Loctite® Big Foot® Bristle Roller Cores

Use with Loctite® Big Foot® Acrylic Primer, Metal Primer and Water-Based Primer / Sealer.

Item # 96153 1 per case



Loctite® Mixer Blades

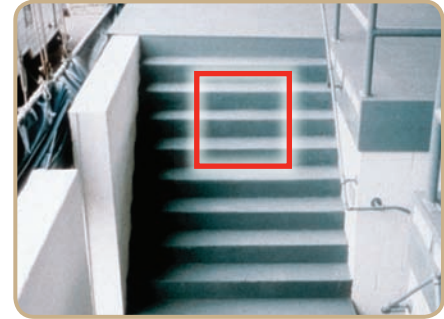
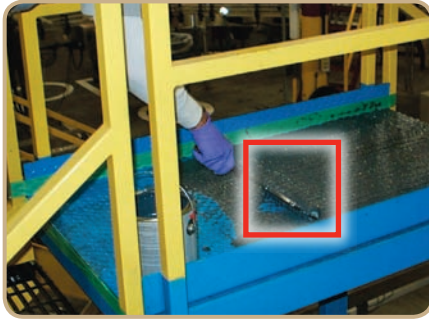
For use with all 1 gallon kits of Loctite® Big Foot® flooring compounds.

Item # 96131 1 per case



ADDITIONAL RESOURCES

Sources REVEALED



[Applications]

- Ramps
- Loading Docks
- Walkways
- Entryways

[Industries]

- Mining
- Wastewater
- Power Generation
- Municipalities

- Food Processing
- Pulp and Paper
- Beverage

APPLICATIONS & INDUSTRIES

[Loctite® Anti-Slip Properties Chart]

	LOCTITE® PRODUCT	ITEM NUMBER	PACKAGE TYPE/SIZE	COLOR	COVERAGE	MIX RATIO BY WEIGHT (RESIN : HARDENER)	MIX RATIO BY VOLUME (RESIN : HARDENER)	MIXTURE TEMPERATURE	WORK TIME (MINUTES)	FUNCTIONAL CURE (HOURS)*	AGENCY APPROVALS
ADHESIVES/COATINGS	BIG FOOT® LOW PROFILE PEDESTRIAN GRADE	40352	1 gallon kit	Safety Yellow	90 ft. ²	5.7:1	3.7:1	130	60	72	CFIA
	LOCTITE® BIG FOOT® FLEXIBLE LOW PROFILE EXTERIOR GRADE	1354766 1352349	1 gallon kit 1 gallon kit	Grey Black	60 ft. ² per gallon	Single Component	Single Component	140	N/A	24/72	N/A
	BIG FOOT® HEAVY DUTY PEDESTRIAN GRADE	96211	1 gallon can	Black	50 ft. ² per gallon	Single Component	Single Component	140	N/A	12/72	CFIA
		96261 96265	1 gallon can 5 gallon pail	Grey							
		40302 40303	1 gallon can 5 gallon pail	Safety Yellow							
	BIG FOOT® VEHICULAR GRADE	96221 96251 96255	1 gallon kit 1 gallon kit 5 gallon kit	Black Grey Grey	40 ft. ² per gallon	17.6:1	8.9:1	140	120	12/72	CFIA
BIG FOOT® ZERO V.O.C.	39915 96231	1 gallon kit 1 gallon kit	Grey Black	35 ft. ² per gallon	8.5:1	3.75:1	140	60	24/72	CFIA	
BIG FOOT® ACRYLIC PEDESTRIAN GRADE	95591 36045	1 gallon pail 1 gallon pail	Grey Black	70 ft. ²	Single Component	Single Component	140	N/A	4/24	CFIA	
PRIMERS/SEALERS	BIG FOOT® METAL PRIMER	96132	1 gallon kit	Grey	250 ft. ²	3.2:1	3:1	140	240	12	N/A
	BIG FOOT® ACRYLIC PRIMER	95581	1 gallon pail	Clear	250 ft. ²	Single Component	Single Component	140	N/A	1-2	N/A
	BIG FOOT® WATER-BASED PRIMER/SEALER	94142	1 gallon kit	Clear	320 ft. ²	1:1	1:1	140	120	3-6	N/A

* Cure Time is for light pedestrian/heavy pedestrian traffic. Values are temperature- and thickness-specific.

PLEASE NOTE: For best adhesion results, it is critical to follow surface preparation procedures outlined in the Technical Data Sheet for the primer/sealer to be used in your application.

[Loctite® Anti-Slip Application Chart]

LOCTITE® PRODUCT	ASPHALT	WOOD	CONCRETE	METAL	FLEXIBLE COATING	WATER RESISTANT	WATER-BASED	CHEMICAL RESISTANT	ANTI-SLIP (PEDESTRIAN)	ANTI-SLIP (VEHICULAR)	ANTI-SLIP (ZERO V.O.C.)
BIG FOOT® LOW PROFILE PEDESTRIAN GRADE		▲	▲	▲			▲	△	▲		
LOCTITE® BIG FOOT® FLEXIBLE LOW PROFILE EXTERIOR GRADE	▲	▲	▲		▲	▲		△	▲		
BIG FOOT® HEAVY DUTY PEDESTRIAN GRADE		▲	▲	▲				▲	▲	△	
BIG FOOT® VEHICULAR GRADE		▲	▲	▲				▲	△	▲	
BIG FOOT® ZERO V.O.C.		▲	▲	▲				▲	△	△	▲
BIG FOOT® ACRYLIC PEDESTRIAN GRADE	▲	▲	▲	▲	▲	▲			▲		

△ Good Choice ▲ Preferred Choice

USE A PRIMER

- Use a primer before applying any anti-slip coating to increase adhesion and seal porosity on concrete surfaces. See the selector chart at the beginning of this section for assistance in choosing the right primer for your application.

HELPFUL HINTS

Your Source for
FLOORING & CONCRETE REPAIR
FLOOR SEALANTS
& TOPCOATS



[Topcoats]

Loctite® Fixmaster® Self-Leveling Flooring Epoxy and Loctite® Fixmaster® High Build Self-Leveling Flooring Epoxy

A two-component, 100% solids, high performance, self-leveling floor coating. A high gloss, seamless, hygienic surface that is extremely hard-wearing and durable. Zero V.O.C. and extremely low odor. Offers high chemical resistance and is available in Clear, Haze and Deck Gray, Sandstone and Tile Red.

Recommended coating system is:
First Coat: Loctite® Fixmaster® High Solids Floor Coating Primer or Loctite® Fixmaster® Water-Based Epoxy Primer/Sealer
Second Coat: Loctite® Fixmaster® Self-Leveling Flooring Epoxy or Loctite® Fixmaster® High Build Self-Leveling Flooring Epoxy

Item #	40332	Deck Grey	Complete 1 gallon kit
	40334	Haze Grey	Complete 1 gallon kit
	40342	Standard	1.5 gallon Hardener*
	40333	Deck Grey	3.5 gallon Resin**
	40335	Haze Grey	3.5 gallon Resin**
	40343	Additive	25 lb. bag high-build additive - add to complete 5 gallon kit

* Needs Clear or Color Resin.
 ** A Hardener must be added.

[Primers / Sealers]

Loctite® Fixmaster® Water-Based Epoxy Primer/Sealer

Two-component, clear, water-based primer. Low viscosity for maximum penetration. Effective barrier coat over many existing finishes. Easy to apply. Excellent for use over acid-etched concrete.

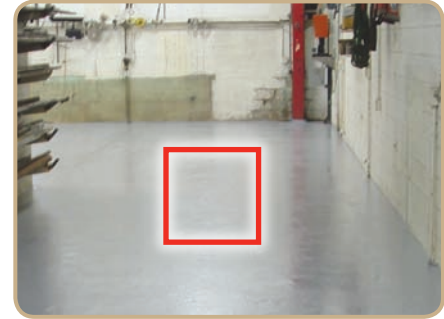
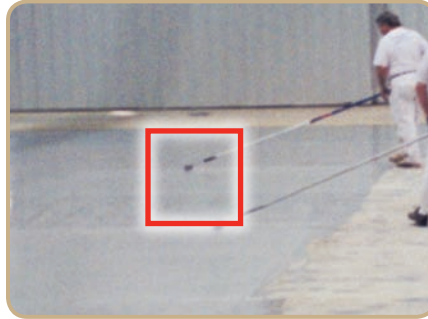
Item #	40348	Complete	2 gallon kit
	40349	Must have Hardener	10 gallon Resin
	40351	Must have Resin	10 gallon Hardener

Loctite® Fixmaster® High Solids Floor Coating Primer

Clear, high solids, fast curing, penetrating primer. Low odor, V.O.C.-compliant. High build, low viscosity for use over mechanically prepared substrates (shot blast). Reduces bubbling and pinholes that occur when coating porous substrates.

Item #	40319	Clear	1 gallon kit
	40320	Clear Resin	3.5 gallon
	40321	Clear Hardener	1.5 gallon

Sources **REVEALED**



[Applications]

- New or Old Concrete
- Masonry

- Wood
- Metal

APPLICATIONS

[Loctite® Floor Sealants & Topcoats Properties Chart]

	LOCTITE® PRODUCT	ITEM NUMBER	PACKAGE TYPE/SIZE	COLOR	COVERAGE	CURE TIME	RECOAT TIME
TOPCOATS	FIXMASTER® SELF-LEVELING FLOORING EPOXY	40332 40334 40342 40333 40335	Complete 1 gallon kit Complete 1 gallon kit 1.5 gallon Hardener 3.5 gallon Resin* 3.5 gallon Resin*	Deck Grey Haze Grey Standard Deck Grey Haze Grey	110 ft. ²	24 hours per foot 72 hours full cure	8 to 16 hours
PRIMER / SEALERS	FIXMASTER® WATER-BASED EPOXY PRIMER / SEALER	40348 40349 40351	2 gallon kit (Complete) 10 gallon Resin (Must have Hardener) 10 gallon Hardener (Must have Resin)	Clear	250 ft. ²	N/A	6 to 48 hours
	FIXMASTER® HIGH SOLIDS FLOOR COATING PRIMER	40319 40320 40321	1 gallon kit 3.5 gallon 1.5 gallon	Clear	200 ft. ²	N/A	8 to 36 hours
ADDITIVES	FIXMASTER® HIGH BUILD SELF- LEVELING FLOORING EPOXY ADDITIVE	40343	25 lb. bag high-build additive – add to complete 5 gallon kit	White	50 ft. ²	24 hours per foot 72 hours full cure	8 to 16 hours

* A Hardener must be added.
** Up to 6 oz. per gallon can be added.

Your Source for
FLOORING & CONCRETE REPAIR
FLOORING, CONCRETE
REPAIR & GROUTING



[Grouts]

Loctite® Fixmaster® Deep Pour Grout

Aggregate-filled, epoxy system for pours up to 6 inches deep, including self-leveling applications under rails and soleplates. High strength material bonds to steel, concrete and itself. Withstands high torque loading.

Item # 99545 5 gallon kit

Loctite® Fixmaster® Fast Set Grout

Self-leveling, non-shrinking grout for installing machinery and setting anchor bolts. Cures quickly. Can be poured up to 1 inch thick. Compression strength and chemical resistance are superior to concrete. Forms strong bonds to old concrete and to itself.

Item # 1158518 2 gallon kit

Loctite® Fixmaster® Super Grout

Aggregate-filled epoxy system designed for grouting up to 18 inches deep, including self-leveling applications under rails and soleplates under typical dry service temperatures of -20°F to 225°F (-29°C to 107°C). A 100% solids epoxy system that is non-shrinking, chemical and corrosion resistant, stronger than concrete, and withstands high torque loading.

Item # 33510 5 gallon kit

Loctite® Fixmaster® Anchor Bolt Grout and Anchor Bolt Grout HP

This two-part structural epoxy is solvent-free, odor-free, high strength and non-sag. It is formulated to anchor threaded rods, bolts, rebar and smooth dowels into concrete, grout-filled block and masonry. The high performance (HP) product offers greater tension load capacity.

Item # 1108885 20.7 oz. dual cartridge
 1108757 8.6 oz. single cartridge HP
 1108758 20.7 oz. dual cartridge HP

[Floor Repair & Resurfacing]

Loctite® Fixmaster® High Performance Quartz

Trowelable epoxy for repairing and protecting floors exposed to concentrated acids, alkalis and solvents. Recommended for restoring and protecting old concrete.

Item # 96495 42 lb. kit

Loctite® Fixmaster® Floor Fill

Self-leveling for repairing and resurfacing cracks in concrete floors. Bonds to old and new concrete, and provides greater strength and chemical resistance properties. Typical dry service temperatures range from -15°F to 130°F (-26°C to 54°C).


Item # 99361 10 lb. kit
 99365 40 lb. kit



Your Source for **FLOOR FILL** Loctite® Fixmaster® Floor Fill 6-Step Process

Loctite® Heavy Duty Manual Cartridge Applicators

The non-sag, high viscosity formulas of Loctite® Fixmaster® Crack Filler NS, Anchor Bolt Grout and Anchor Bolt Grout HP require a heavy-duty dispensing tool.



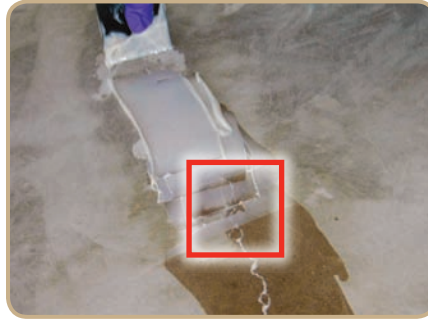
ADDITIONAL RESOURCES

Item # 1093940 Use with 300 ml cartridges

1093981 Use with 600 ml dual cartridges

CONSUMABLES – DISPENSE ACCESSORIES
 Static Mix Nozzles and Accessories – Pages 187-188

Sources REVEALED



[Applications]

- Pump
- Gearbox
- Concrete Repair
- Conveyor Systems
- Shaft Repair

[Industries]

- Mining
- Wastewater
- Power Generation

- Food Processing
- Pulp and Paper
- Beverage

APPLICATIONS
& INDUSTRIES

Loctite® Fixmaster® Magna-Crete

A two-component, rapid-setting concrete repair and grouting system. Chemically resistant to most common liquids and chemicals, and can be mixed and applied at temperatures from -15°F to 130°F (-26°C to 54°C). Bonds to concrete, wood, glass, steel and other construction materials. Ready for service in one hour. Summer and Winter Additives are also available to aid cure times.

- Item # 95551 1 gallon kit
- 95555 5 gallon kit
- 40270 1 lb. tub – Winter Additive
- 40271 1 lb. tub – Summer Additive
- 1012500 1 lb. 12 oz. kit
- 831304 2475 lb. tote
- 976786 55 gallon drum – Activator

Loctite® Fixmaster® Flexible Joint Sealant

A two-component, pourable, urethane-based sealant that is 100% solids and contains no solvents. Excellent adhesion, high chemical resistance and excellent tensile strength, flexibility and elongation for expansion and control joints.

- Item # 40347 1 gallon kit

Loctite® Fixmaster® Concrete Repair Epoxy

Enables permanent repairs to concrete and masonry. Convenient stick contains pre-measured portions of activator and base. Once cured, it can be tapped, drilled, screwed, sawed, filed or painted, and will have an appearance and texture similar to concrete. Sets in 5-10 minutes.

- Item # 39366 4 oz. stick

Loctite® Fixmaster® Crack Filler

A two-component, natural in color, epoxy repair adhesive that is 100% solids and contains no solvents. It has excellent workability and flow. Fills cracks in concrete, wood, masonry, and previously coated surfaces.

- Item # 40346 1 gallon kit

Loctite® Fixmaster® Crack Filler NS

Non-drip, non-sag formula will repair holes, spalls and cracks in concrete, brick, block and masonry on horizontal or vertical surfaces. This two-part, rapid-curing, high strength epoxy will not soften over time and can be used indoors or outdoors.

- Item # 1108886 8.6 oz. cartridge

Loctite® Fixmaster® Crack Filler SL

Two-component, self-leveling, flexible formula in a coaxial cartridge. Can be used indoors or outdoors. Bonds concrete, block, brick, stone, wood and metal.

- Item # 1291113 8.6 oz. cartridge

[Chocking Compound]

Loctite® Fixmaster® Marine Chocking

Self-leveling, fast curing, non-shrinking grout. Outstanding chemical and vibration resistance and compressive strength to withstand maximum loads.

- Item # Green 97572 2 gallon kit
- Orange 37316 1 gallon kit
- Orange 96102 2 gallon kit

- When checking for damaged concrete, tap around the repair area with a hammer and listen for hollow spots. This will help to reveal damaged areas that are not apparent.
- Use Loctite® Fixmaster® Magna-Crete Summer Additive or Winter Additive with Loctite® Fixmaster® Magna-Crete to accelerate or slow the cure in high temperature or speed the cure in low temperature environments.

HELPFUL HINTS



Your Source for **CONCRETE REPAIR**
Loctite® Fixmaster® Concrete Repair Epoxy 3-Step Process

Your Source for
FLOORING & CONCRETE REPAIR
FLOORING, CONCRETE
REPAIR & GROUTING



[Loctite® Flooring, Concrete Repair & Grouting Properties Chart]

	LOCTITE® PRODUCT	ITEM NUMBER	PACKAGE TYPE/SIZE	COLOR	COVERAGE	MIXTURE VISCOSITY (cP)	MAXIMUM TEMPERATURE	COMPRESSIVE STRENGTH (psi)	WORKING TIME	FUNCTIONAL CURE	MIX RATIO BY VOLUME (RESIN : HARDENER)	MIX RATIO BY WEIGHT (RESIN : HARDENER)	AGENCY APPROVALS
GROUTS	FIXMASTER® DEEP POUR GROUT	99545	5 gallon kit	Black	660 in. ³	Pourable	225	14,500	30 minutes	24 hours	4.1:1 to 8.2 Filler	16.4:3.6 to 80 Filler	CFIA
	FIXMASTER® FAST SET GROUT	1158518	2 gallon kit	Red	347 in. ³	5,500	200	14,500	10 minutes	12 hours	100:11.7	100:6.5	CFIA
	FIXMASTER® SUPER GROUT	33510	5 gallon kit	Red	620 in. ³	Pourable	225	12,900	4.75 hours	24 hours	N/A	10:5 to 85 Aggregate	N/A
ANCHOR BOLT GROUT	FIXMASTER® ANCHOR BOLT GROUT HP	1108757 1108758	8.6 oz. single cartridge 20.7 oz. dual cartridge	Grey	15.5 in. ³ 37.36 in. ³	N/A	110 115	9,880	20 minutes	4 hours	1:1	N/A	N/A
	FIXMASTER® ANCHOR BOLT GROUT	1108885	20.7 oz. dual cartridge	Grey	37.36 in. ³	N/A	110	11,890	20 minutes	2 hours	1:1	N/A	N/A
FLOOR REPAIR & RESURFACING	FIXMASTER® HIGH PERFORMANCE QUARTZ (EXTREME CHEMICAL RESISTANCE)	96495	42 lb. kit	Grey	15 ft. ^{2*}	Semi-Pourable	150	12,000	Primer - 45 minutes Topcoat - 60 minutes	24 hours	Primer - 100:61 Topcoat - 100:60 to 282 Filler	N/A	CFIA
	FIXMASTER® FLOOR FILL	99361 99365	10 lb. kit 40 lb. kit	Grey	133 in. ³ 532 in. ³	Semi-Pourable	225	15,000	40 minutes	24 hours	4.6:1 to 9.8 Filler	16:3.2 to 80.8 Filler	CFIA
	FIXMASTER® MAGNA-CRETE	95551 95555 1012500 831304 976786	1 gallon kit 5 gallon kit 1 lb. 12 oz. kit 2475 lb. tote 55 gallon drum - Activator	Grey	170 in. ³ 770 in. ³	N/A	2,000	13,000	5 to 20 minutes	1 to 2 hours	N/A	N/A	CFIA
	WINTER ADDITIVE	40270	1 lb. tub	White	N/A					Speeds cure by about 10 minutes			
	SUMMER ADDITIVE	40271	1 lb. tub							Slows cure by about 10 minutes			
	FIXMASTER® MAGNA-CRETE ACTIVATOR	36334	10 lb. bottle	N/A	N/A	N/A	N/A	N/A	N/A	N/A	N/A	N/A	N/A
	FIXMASTER® CONCRETE REPAIR EPOXY	39366	4 oz. stick	Grey	N/A	Putty	250	12,000	4 to 7 minutes	1 hour	N/A	N/A	N/A
	FIXMASTER® FLEXIBLE JOINT SEALANT	40347	1 gallon kit	Grey	231 in. ³	17,000	180	N/A	30 minutes	6 hours	1:1	N/A	N/A
	FIXMASTER® CRACK FILLER	40346	1 gallon kit	Off-White	231 in. ³	80,000	180	N/A	30 minutes	6 hours	1:1	N/A	N/A
	FIXMASTER® CRACK FILLER NS	1108886	8.6 oz. cartridge	Grey	15.5 in. ³	N/A	135°F (57°C)	9,800	8 minutes	2 hours	1:1	N/A	N/A
FIXMASTER® CRACK FILLER SL	1291113	8.6 oz. cartridge	Grey	15.5 in. ³	N/A	120°F (49°C)	9,800	3 to 6 minutes	90 minutes	1:1	N/A	N/A	
CHOCKING COMPOUND	FIXMASTER® MARINE CHOCKING	97572	2 gallon kit	Green	378 in. ³	15,000	250	22,000	10 minutes	24 hours	100:11.6	100:6.9	ABS, CFIA, Lloyd's
		37316 96102	1 gallon kit 2 gallon kit	Orange	132 in. ³ 378 in. ³								ABS, Lloyd's, NAVSEA, NEHC

* Coverage at 1/4 in. thickness.

[Loctite® Flooring, Concrete Repair & Grouting Application Chart]

LOCTITE® PRODUCT	ANCHOR BOLT FASTENING	CHOCKING (SHIPS)	CONCRETE FLOOR REPAIR	NON-SAG CONCRETE REPAIR	ENGINE INSTALLATION	GROUT HEAVY EQUIPMENT 1-6 IN.	GROUT HEAVY EQUIPMENT TO 18 IN.	GROUT LIGHT EQUIPMENT 1 IN. OR LESS	LEVELING EQUIPMENT	ACID/CHEMICAL RESISTANT FLOOR REPAIR	RAMPS & LOADING DOCKS	HIGHWAYS & ROADWAYS	LEVELING FLOORS	
GROUTS	FIXMASTER® DEEP POUR GROUT				△	▲		△	△					
	FIXMASTER® FAST SET GROUT				△	△		▲	▲					
	FIXMASTER® SUPER GROUT				△	△	▲		△					
ANCHOR BOLT GROUT	FIXMASTER® ANCHOR BOLT GROUT & FIXMASTER® ANCHOR BOLT GROUT HP	▲												
FLOOR REPAIR & RESURFACING	FIXMASTER® HIGH PERFORMANCE QUARTZ (EXTREME CHEMICAL RESISTANCE)		△							▲				
	FIXMASTER® FLOOR FILL		▲		△					△				
	FIXMASTER® MAGNA-CRETE		▲			△		△			▲	▲	▲	
	FIXMASTER® CONCRETE REPAIR EPOXY	▲		▲					△	△	▲			
	FIXMASTER® FLEXIBLE JOINT SEALANT			▲						▲				
	FIXMASTER® CRACK FILLER			▲						▲				
	FIXMASTER® CRACK FILLER SL			▲						▲				
	FIXMASTER® CRACK FILLER NS				▲									
	CHOCKING COMPOUND	FIXMASTER® MARINE CHOCKING	▲			▲			△	△				

△ Good Choice ▲ Preferred Choice