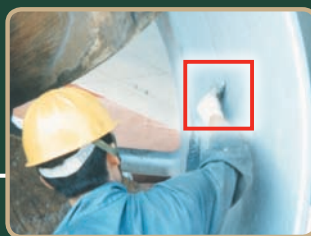


Your Source for COATINGS



[Table of Contents]

COATINGS	53
PROTECTIVE COATINGS	57
WEAR-RESISTANT COATINGS	59

[Protective Coatings]

Protective coatings serve many functions, including:

- Protection
- Insulating
- Sealing
- Corrosion protection

They can also be used to add gripping power or to color-code equipment. Many of these products also offer protection from harsh chemicals like acids, salts and alkalis, which are damaging to most industrial equipment.

WHAT IS THE DIFFERENCE BETWEEN A TREATMENT & A COATING?

A treatment, such as Loctite® Extend® Rust Treatment, is used to treat existing rust in an effort to correct a corrosion problem.

A coating is a product used for preventive maintenance and should be used on a clean part or a treated part. If corrosion exists on a surface, a coating will not correct the problem, and the substrate will continue to corrode underneath the protective coating. Using surface treatments and protective coatings together is the most effective solution for surface protection.

Loctite® Adhesives and Sealants Product Specialists are available to assist you. For application assistance, call **1-800-LOCTITE (562-8483)**; *within Canada, call 1-800-263-5043*; or, contact us through the web at www.henkelna.com/loctite.

— **STRAIGHT FROM** *The Source* —

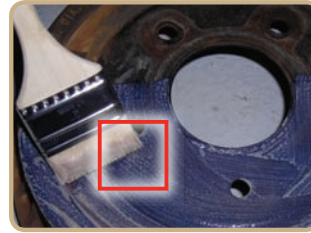
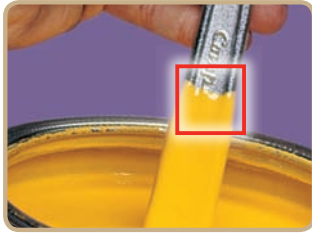
[Wear-Resistant Coatings]

ASSET PROTECTION

Wear and corrosion are common causes for failure in industrial equipment. Often this equipment is very expensive, and repairing and protecting these assets offers a significant cost savings. Loctite® Nordbak® wear-resistant coatings offer superior wear protection for new and worn equipment in a variety of applications. Extending service life and increasing efficiency through reduced friction are just two examples of the benefits of using protective coatings to safeguard your assets.

WHAT IS THE PROPER SURFACE PREPARATION FOR WEAR-RESISTANT COATINGS?

A properly prepared surface is one that has been cleaned, dried and abraded. Substrates should be free from contamination, including oils, grease, dust, etc. It is also important that a surface is dry before working with a wear-resistant coating, because moisture on the surface can interfere with the curing process. The final step is to abrade the surface, which provides an increased surface area for bonding. When working with metals, the surface should be abraded to a near-white metal finish, which also helps to ensure that all surface corrosion is removed.



Your Source **PROTECTIVE COATINGS GUIDE**

WHAT TYPE OF PROTECTION DO YOU NEED?

Corrosion		Extreme Chemical Attack	Specialty Coatings																																																																																						
<p>Rust Treatment</p> <p>Loctite® Extend Coating</p> <table border="0"> <tr> <td>Item #</td> <td>Clear</td> <td>30539</td> <td>10.25 oz. net. wt. aerosol</td> </tr> <tr> <td></td> <td>Liquid</td> <td></td> <td></td> </tr> <tr> <td></td> <td>Converts from a White</td> <td>75430</td> <td>1 quart bottle</td> </tr> <tr> <td></td> <td>Liquid to</td> <td>75448</td> <td>1 gallon bottle</td> </tr> <tr> <td></td> <td>Matte Black</td> <td>75465</td> <td>5 gallon pail</td> </tr> </table>	Item #	Clear	30539	10.25 oz. net. wt. aerosol		Liquid				Converts from a White	75430	1 quart bottle		Liquid to	75448	1 gallon bottle		Matte Black	75465	5 gallon pail	<p>Preventive Protection</p> <p>NON-DRYING</p> <p>Loctite® Maxi-Coat™</p> <table border="0"> <tr> <td>Item #</td> <td>51211</td> <td>12 oz. net wt. aerosol</td> </tr> <tr> <td></td> <td>51213</td> <td>1 gallon can</td> </tr> </table> <p>CATHODIC PROTECTION</p> <p>Loctite® Cold Galvanizing Compound</p> <table border="0"> <tr> <td>Item #</td> <td>82039</td> <td>15 oz. net. wt. aerosol</td> </tr> </table> <p>UNDERCOATING</p> <p>Loctite® Heavy-Duty Rubberized Undercoating</p> <table border="0"> <tr> <td>Item #</td> <td>30538</td> <td>16 oz. net. wt. aerosol</td> </tr> </table>	Item #	51211	12 oz. net wt. aerosol		51213	1 gallon can	Item #	82039	15 oz. net. wt. aerosol	Item #	30538	16 oz. net. wt. aerosol	<p>Loctite® Nordbak® Chemical-Resistant Coating</p> <table border="0"> <tr> <td>Item #</td> <td>96092</td> <td>12 lb. kit</td> </tr> </table>	Item #	96092	12 lb. kit	<p>COLOR CODING</p> <p>Loctite® Color Guard® Coating</p> <table border="0"> <tr> <td>Item #</td> <td>Black</td> <td>34979</td> <td>14.5 fl. oz. can</td> </tr> <tr> <td></td> <td>Black</td> <td>34980</td> <td>1 gallon can</td> </tr> <tr> <td></td> <td>Black</td> <td>34981*</td> <td>54 gallon drum</td> </tr> <tr> <td></td> <td>Blue</td> <td>34982</td> <td>14.5 fl. oz. can</td> </tr> <tr> <td></td> <td>Blue</td> <td>34983</td> <td>1 gallon can</td> </tr> <tr> <td></td> <td>Blue</td> <td>34984*</td> <td>54 gallon drum</td> </tr> <tr> <td></td> <td>Red</td> <td>34985</td> <td>14.5 fl. oz. can</td> </tr> <tr> <td></td> <td>Red</td> <td>34986</td> <td>1 gallon can</td> </tr> <tr> <td></td> <td>Red</td> <td>34987*</td> <td>54 gallon drum</td> </tr> <tr> <td></td> <td>Yellow</td> <td>34988</td> <td>14.5 fl. oz. can</td> </tr> <tr> <td></td> <td>Yellow</td> <td>34989</td> <td>1 gallon can</td> </tr> <tr> <td></td> <td>Yellow</td> <td>34991*</td> <td>54 gallon drum</td> </tr> </table> <p>BELT DRESSING</p> <p>Loctite® Belt Dressing and Conditioner</p> <table border="0"> <tr> <td>Item #</td> <td>30527</td> <td>12 oz. net. wt. aerosol</td> </tr> </table>	Item #	Black	34979	14.5 fl. oz. can		Black	34980	1 gallon can		Black	34981*	54 gallon drum		Blue	34982	14.5 fl. oz. can		Blue	34983	1 gallon can		Blue	34984*	54 gallon drum		Red	34985	14.5 fl. oz. can		Red	34986	1 gallon can		Red	34987*	54 gallon drum		Yellow	34988	14.5 fl. oz. can		Yellow	34989	1 gallon can		Yellow	34991*	54 gallon drum	Item #	30527	12 oz. net. wt. aerosol
Item #	Clear	30539	10.25 oz. net. wt. aerosol																																																																																						
	Liquid																																																																																								
	Converts from a White	75430	1 quart bottle																																																																																						
	Liquid to	75448	1 gallon bottle																																																																																						
	Matte Black	75465	5 gallon pail																																																																																						
Item #	51211	12 oz. net wt. aerosol																																																																																							
	51213	1 gallon can																																																																																							
Item #	82039	15 oz. net. wt. aerosol																																																																																							
Item #	30538	16 oz. net. wt. aerosol																																																																																							
Item #	96092	12 lb. kit																																																																																							
Item #	Black	34979	14.5 fl. oz. can																																																																																						
	Black	34980	1 gallon can																																																																																						
	Black	34981*	54 gallon drum																																																																																						
	Blue	34982	14.5 fl. oz. can																																																																																						
	Blue	34983	1 gallon can																																																																																						
	Blue	34984*	54 gallon drum																																																																																						
	Red	34985	14.5 fl. oz. can																																																																																						
	Red	34986	1 gallon can																																																																																						
	Red	34987*	54 gallon drum																																																																																						
	Yellow	34988	14.5 fl. oz. can																																																																																						
	Yellow	34989	1 gallon can																																																																																						
	Yellow	34991*	54 gallon drum																																																																																						
Item #	30527	12 oz. net. wt. aerosol																																																																																							

Your Source for
COATINGS



**ARE YOU EXPERIENCING MECHANICAL WEAR / ABRASION
OR CORROSION / EROSION?**

Wear / Abrasion

SLIDING ABRASION OR IMPACT RESISTANCE?

Sliding Abrasion

COARSE PARTICLE, FINE PARTICLE OR TURBULENCE?

Coarse / Large Particle Abrasion		Fine Particle Abrasion	
LARGE PARTICLE WEAR TO 250°F (121°C)	FAST CURING, LARGE PARTICLE WEAR TO 225°F (107°C)	FINE PARTICLE WEAR TO 250°F (121°C)	FAST CURING, FINE PARTICLE WEAR TO 225°F (107°C)
Loctite® Nordbak® Wearing Compound Item # 1324008 5 lb. kit 1323940 25 lb. kit	Loctite® Nordbak® Fast Cure Wearing Compound Item # 96373 6 lb. kit	Loctite® Nordbak® Pneu-Wear Item # 98383 3 lb. kit 98382 25 lb. kit	Loctite® Nordbak® Fast Cure Pneu-Wear Item # 96363 6 lb. kit 1117828* 25 lb. kit
LARGE PARTICLE WEAR TO 450°F (232°C)	COMBINED RESISTANCE FOR LARGE AND FINE PARTICLE TO 250°F (121°C)	FINE PARTICLE WEAR TO 450°F (232°C)	NON-RUST PUTTY WITH FINE PARTICLE WEAR RESISTANCE
Loctite® Nordbak® High Temperature Wearing Compound Item # 99112 25 lb. kit	Loctite® Nordbak® Combo Bead Wearing Compound Item # 1324571 6 lb. kit	Loctite® Nordbak® High Temperature Pneu-Wear Item # 98372 25 lb. kit	Loctite® Fixmaster® Wear-Resistant Putty Item # 98742 1 lb. kit 98743 3 lb. kit
LARGE PARTICLE WEAR TO 550°F (288°C)	LOW ODOR, LARGE PARTICLE WEAR TO 250°F (121°C)	FINE PARTICLE WEAR TO 550°F (288°C)	
Loctite® Nordbak® Ultra-High Temperature Wearing Compound Item # 96392 25 lb. kit	Loctite® Nordbak® Low Odor Wearing Compound Item # 41343 25 lb. kit	Loctite® Nordbak® Ultra-High Temperature Pneu-Wear Item # 96332 25 lb. kit	

* Made-to-order item.



Your Source **WEAR-RESISTANT COATINGS GUIDE**



Liquid / Slurry Turbulence

LOW FRICTION, TURBULENCE RESISTANCE TO 200°F (93°C)

Loctite® Nordbak® Brushable Ceramic

Item #	Grey	98733	2 lb. kit
	Grey	98732	6 lb. kit
	White	96443	2 lb. kit
	Grey	997367*	12 lb. kit

LOW FRICTION, TURBULENCE RESISTANCE TO 550°F (288°C)

Loctite® Nordbak® High Temperature Brushable Ceramic

Item #	96433	2 lb. kit
	997369*	12 lb. kit

THIN MIL, LOW FRICTION, TURBULENCE RESISTANCE TO 200°F (93°C)

Loctite® Nordbak® Brushable Ceramic – Thin Mil

Item #	Grey	40592	2 lb. kit
	Blue	40591	2 lb. kit
	Black	40590	2 lb. kit

Impact

Loctite® Nordbak® High Impact Wearing Compound

Item #	1327836	25 lb. kit
---------------	---------	------------

Loctite® Fixmaster® Flex 80™ Putty

Item #	97423	1 lb. kit
	97422	6 lb. kit

Specialty

Loctite® Nordbak® Castable Wearing Compound

Item #	98992	25 lb. kit
---------------	-------	------------

Loctite® Ceramic Tile Adhesive

Item #	1324544	20 lb. kit
---------------	---------	------------

Extreme Chemical Resistance

Loctite® Nordbak® Chemical-Resistant Coating

Item #	96092	12 lb. kit
---------------	-------	------------

WEAR-RESISTANT COATINGS TECHNICAL CATALOG AND BROCHURE

Let Henkel help you select the proper coating for your application.

Refer to Loctite® Wear-Resistant Coatings Technical Catalog and Brochure by visiting

www.henkelna.com/loctite.

Click on **Literature** and then select **Coatings** to view the guides or request copies.

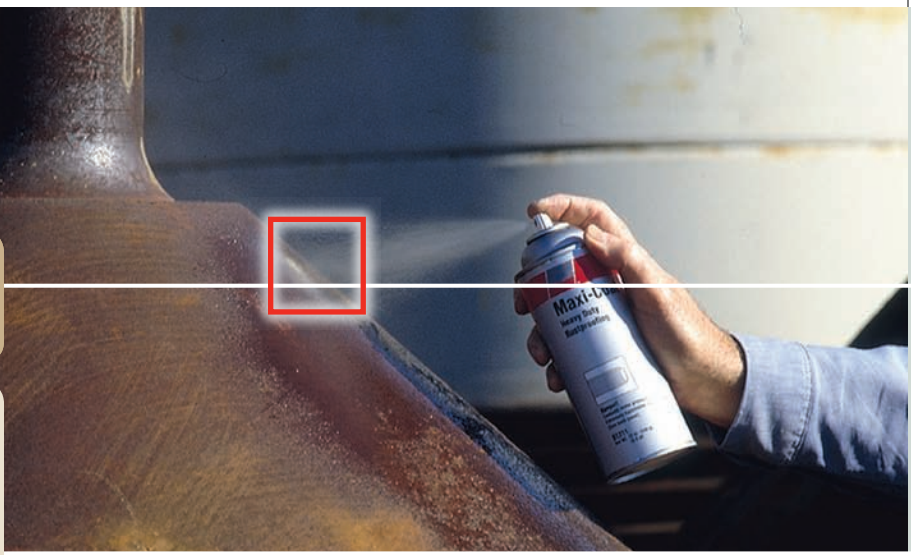


ADDITIONAL RESOURCES

* Made-to-order item.

Your Source for **COATINGS**
PROTECTIVE COATINGS

- Protects, seals, insulates, prevents corrosion, color codes and adds gripping power
- Products available that provide excellent resistance to acids, alkalis, salt and moisture, which can damage equipment



[Liquid Rubber Coatings]

Loctite® Color Guard® Coating
INHIBITS RUST AND CORROSION, SEALS, INSULATES AND IDENTIFIES

A solvent-based, modified thermoplastic liquid coating that dries to a durable, flexible, rubber-like protective coating on parts and equipment. Dip, spray or brush to apply. Great for tools, metals, electrical connections, masonry, wood, conveyors, glass, rope and fabric.

Item #	Black	34979	14.5 fl. oz. can
	Black	34980	1 gallon can
	Black	34981*	54 gallon drum
	Blue	34982	14.5 fl. oz. can
	Blue	34983	1 gallon can
	Blue	34984*	54 gallon drum
	Red	34985	14.5 fl. oz. can
	Red	34986	1 gallon can
	Red	34987*	54 gallon drum
	Yellow	34988	14.5 fl. oz. can
	Yellow	34989	1 gallon can
	Yellow	34991*	54 gallon drum

Loctite® Color Guard® Primer

Promotes adhesion on metals; highly recommended for use when coating metal hand tools. Allow the primer to dry for 10 to 15 minutes before coating with Loctite® Color Guard® Coatings. Use with pressure pot or airless spray systems.

Item #	34994	1 gallon can
--------	-------	--------------

Loctite® Color Guard® Thinner

Thinner is required for use when spraying any of the Loctite® Color Guard® Coatings. Helps reduce any clogging and is recommended for use with pressure pot or airless spray systems. See technical data sheets on www.henkelna.com/loctite for other helpful suggestions. This product can also be used to remove cured Loctite® Color Guard® Coating.

Item #	34995	1 gallon can
--------	-------	--------------

* Made-to-order item.

[Rust Treatment]

Loctite® Extend® Rust Treatment

Converts existing rust (rust required) into a stable base. Cured product acts as a primer ready for painting with oil- or solvent-based paint. Protects surface from corrosion. Use on metal pipes, valves, fittings, outside surfaces of storage tanks, fences, guardrails, wrought iron furniture, conveyors, and construction and agricultural equipment.

Item #	30539	10.25 oz. net wt. aerosol (Clear)
	75430	1 quart bottle
	75448	1 gallon bottle
	75465	5 gallon pail

[Specialty Coatings]

Loctite® Heavy-Duty Rubberized Undercoating

This heavy-duty undercoating seals, protects and insulates. Rubberized for maximum durability.

Item #	30538	16 oz. net wt. aerosol
--------	-------	------------------------

Loctite® Maxi-Coat™

Heavy-duty coating provides long-term protection for metal parts, equipment and machinery. Forms a protective, waxy film that seals out moisture, air, acid and other corrosive elements. Great for protecting parts in storage. Removable with Loctite® Electrical Contact Cleaner.

Item #	51211	12 oz. net wt. aerosol
	51213	1 gallon can

Loctite® Cold Galvanizing Compound

Sprays on metal surfaces to prevent corrosion even when the surface is scratched. Ideal touch-up for welded seams. Highly resistant to salt corrosion and water. Not resistant to acid or alkaline solutions. Contains no ozone-depleting compounds.

Item #	82039	15 oz. net wt. aerosol
--------	-------	------------------------

Loctite® Belt Dressing & Conditioner

Recommended to prevent slipping and increase friction for all types of belts. Extends belt life. Penetrates the cord fibers of "V" belts to restore pliability and flexibility. Eliminates squeaking and glazing.

Item #	30527	12 oz. net wt. aerosol
--------	-------	------------------------

Loctite® Nordbak® Chemical Resistant Coating

Smooth, glossy, low friction finish protects against turbulence, abrasion and cavitation. This advanced epoxy protects equipment from extreme chemical attack and corrosion. Low viscosity epoxy can be applied by brush.

Item #	96092	12 lb. kit
--------	-------	------------

COATING HINTS

- When coating any surface, make sure the parts are clean and dry. Try doing a small test piece first to confirm that the coating meets your expectations. This will save you time and money if the desired results are not achieved.
- Loctite® Color Guard® Thinner can be used to remove cured Loctite® Color Guard® Coating.
- Loctite® Color Guard® Coating colors can be mixed to make different colors.

HELPFUL HINTS

Sources REVEALED



[Applications]

- Tool Handle
- Temporary Storage
- Rust Prevention
- Corrosion Resistance

[Industries]

- Mining
- Wastewater
- Power Generation
- Food Processing

- Pulp and Paper
- Beverage
- Tool and Die
- General Manufacturing

APPLICATIONS & INDUSTRIES

[Loctite® Protective Coatings Properties Chart]

LOCTITE® PRODUCT	ITEM NUMBER	PACKAGE TYPE/SIZE	COLOR	TEMPERATURE	DRY TIME	FULL CURE	COVERAGE	APPLICATION METHOD	AGENCY APPROVALS	
LIQUID RUBBER COATINGS	COLOR GUARD® COATING	34979 34980 34981*	Black	Up to 200°F (93°C)	4 hours (allow 30 minutes between coats)	24 hours at ambient temperature	180 sq. ft. per gallon at 2.5 mil thickness	Dip, brush or spray	CFIA	
	COLOR GUARD® COATING	34982 34983 34984*	Blue							
	COLOR GUARD® COATING	34985 34986 34987*	Red							
	COLOR GUARD® COATING	34988 34989 34991*	Yellow							
	COLOR GUARD® PRIMER (PROMOTES ADHESION ON METALS)	34994	1 gallon can	Grey	N/A	10 to 15 minutes	10 to 15 minutes before dipping or coating	150 to 200 sq. ft. per gallon at 0.5 to 1 mil thickness	Brush or spray	N/A
	COLOR GUARD® THINNER	34995	1 gallon can	Clear Solvent	N/A	Mixed in coating	N/A	Brushing: 1 part thinner to 2 parts coating	Brush or spray	N/A
RUST TREATMENT	EXTEND® RUST TREATMENT	30539	Clear Liquid	Up to 250°F (121°C)	Re-coat in 2 to 3 minutes	24 hours at ambient temperature	200 sq. ft. per gallon at 2.5 mil thickness	Aerosol spray	ABS, CFIA	
		75430 75448 75465	Converts from a White Liquid to Matte Black	Up to 250°F (121°C)	Re-coat in 20 minutes			Brush or commercial sprayer		
	HEAVY-DUTY RUBBERIZED UNDERCOATING	30538	16 oz. net wt. aerosol	Brown to Black	Up to 200°F (93°C)	20 minutes	24 hours at ambient temperature	Recommended 2 coats	Aerosol spray	N/A
SPECIALTY COATINGS	MAXI-COAT™	51211 51213	Brown	Up to 200°F (93°C)	3 to 6 hours	Waxy coat	Apply heavy coat with brush	Brush on	CFIA	
	COLD GALVANIZING COMPOUND	82039	Low Gloss Grey	Up to 400°F (204°C) constant; 600°F (316°C) intermittent	15 minutes to touch	24 hours at ambient temperature	Apply heavy coat at 12 to 15 inches away	Aerosol spray	CFIA	
	BELT DRESSING & CONDITIONER	30527	White	Up to 200°F (93°C)	Penetrates belt	Increases friction right away	Spray light coating	Aerosol spray	CFIA	
	NORDBAK® CHEMICAL RESISTANT COATING	96092	12 lb. kit	Grey	Up to 150°F (65°C) wet; >200°F (93°C) dry	16 hours	16 hours	74 sq. ft. at 20 mil thickness	Roll or brush on	CFIA

Your Source for **COATINGS**
WEAR-RESISTANT
COATINGS

- Utilizes the superior wear properties of ceramic and the convenience of two-part epoxies to protect equipment like pumps chutes, and augers in harsh industrial environments
- Stands up to almost any corrosion, abrasion and wear problem you can encounter
- Ideal for all of those large-scale repairs that have to last
- Available in trowelable and brushable formulations with special fillers for tough conditions



[Coarse / Large
Particle Abrasion]

**Loctite® Nordbak®
Wearing Compound**

Large ceramic beads and fine silicon carbide in a high performance epoxy system protect against sliding abrasion to 250°F. Non-sagging. Trowelable.

Item # 1324008 5 lb. kit
1323940 25 lb. kit

**Loctite® Nordbak® High
Temperature Wearing Compound**

Resists sliding abrasion and temperatures to 450°F. Must be post-cured for maximum temperature resistance and performance. Trowelable.

Item # 99112 25 lb. kit

**Loctite® Nordbak® Ultra-High
Temperature Wearing Compound**

Resists sliding abrasion and temperatures to 550°F. Must be post-cured for maximum temperature resistance and performance. Trowelable.

Item # 96392 25 lb. kit

**Loctite® Nordbak®
Fast Cure Wearing Compound**

A faster curing version of Loctite® Nordbak® Wearing Compound, this epoxy renews worn surfaces fast, reducing downtime to put equipment back in service in as few as 3 hours. Trowelable.

Item # 96373 6 lb. kit

**Loctite® Nordbak® Combo
Bead Wearing Compound**

This epoxy system combines the abrasion-resistant qualities of both large and small ceramic beads and silicon carbide. Protects against hard sliding abrasion and extends the life of material handling equipment. Trowelable.

Item # 1324571 6 lb. kit

[Coarse / Large
Particle Abrasion]

**Loctite® Nordbak®
Low Odor Wearing Compound**

Loctite® Nordbak® Low Odor Wearing Compound offers the same protection against coarse/large particle abrasion as Loctite® Nordbak® Wearing Compound, while offering a low odor formulation. This coating is particularly suited for applications in areas where ventilation may be limited.

Item # 41343 25 lb. kit

[Fine Particle Abrasion]

Loctite® Nordbak® Pneu-Wear

Filled with small ceramic beads and silicon carbide for maximum protection against fine particle abrasion to 250°F. Trowelable.

Item # 98383 3 lb. kit
98382 25 lb. kit

**Loctite® Nordbak®
High Temperature Pneu-Wear**

Protects against fine particle abrasion and temperatures to 450°F. Must be post-cured for maximum temperature resistance and performance. Trowelable.

Item # 98372 25 lb. kit

**Loctite® Nordbak®
Ultra-High Temperature Pneu-Wear**

Protects against fine particle abrasion and temperatures to 550°F. Must be post-cured for maximum temperature resistance and performance. Trowelable.

Item # 96332 25 lb. kit

**Loctite® Nordbak® Fast
Cure Pneu-Wear**

Fast cure version of standard Loctite® Nordbak® Pneu-Wear protects against fine particle abrasion to 225°F and cures in just 3 hours. Trowelable.

Item # 96363 6 lb. kit
1117828* 25 lb. kit

* Made-to-order item.



Sources REVEALED

[Applications]

- Pump
- Gearbox
- Concrete Repair
- Conveyor Systems
- Shaft Repair

[Industries]

- Mining
- Wastewater
- Power Generation

- Food Processing
- Pulp and Paper
- Beverage

APPLICATIONS
& INDUSTRIES

Loctite® Fixmaster® Wear-Resistant Putty

Ceramic fibers give this trowelable putty excellent wear and abrasion resistance properties. Cures to a smooth, low friction surface. For surfaces exposed to wear, erosion and cavitation.

Item # 98742 1 lb. kit
98743 3 lb. kit

[Impact Wear Resistance]

Loctite® Nordbak® High Impact Wearing Compound

Rubber-modified epoxy protects against sliding abrasion and impact to 250°F (121°C). Trowelable.

Item # 1327836 25 lb. kit

Loctite® Nordbak® Ceramic Tile Adhesive

High strength. For securing ceramic wear tiles to vertical, horizontal and overhead surfaces. Excellent shock and impact resistance. Trowelable. Resists temperatures to 200°F (93°C).

Item # 1324544 20 lb. kit

[Liquid / Slurry Turbulence]

Source's PICK

Loctite® Nordbak® Brushable Ceramic

Brushes on to form a smooth, corrosion-resistant coating. Protects against turbulence, abrasion, and cavitation. Can also be used as a topcoat over Loctite® Nordbak® Wearing Compound for surface rebuilding and lasting protection. Resists temperatures up to 200°F (93°C).

Item #	Grey	98733	2 lb. kit
	Grey	98732	6 lb. kit
	White	96443	2 lb. kit
	Grey	997367*	12 lb. kit

Loctite® Nordbak® High Temperature Brushable Ceramic

Provides protection against turbulence, abrasion and cavitation up to 550°F (288°C). Must be post-cured for maximum temperature resistance and performance.

Item #	96433	2 lb. kit
	997369*	12 lb. kit

Loctite® Fixmaster® Flex 80™ Putty

A trowelable, two-part urethane for rebuilding and repairing rubber parts and linings, providing impact, abrasion and corrosion-resistant protection.

Item #	97423	1 lb. kit
	97422	6 lb. kit

[Specialty Wear Resistance]

Loctite® Nordbak® Castable Wearing Compound

For casting wear-resistant parts. Pourable ceramic compound can be cast into any shape. Resists temperatures to 225°F (107°C).

Item # 98992 25 lb. kit

[Specialty Coatings]

Loctite® Nordbak® Chemical Resistant Coating

Smooth, glossy, low friction finish protects against turbulence, abrasion and cavitation. This advanced epoxy protects equipment from extreme chemical attack and corrosion. Low viscosity epoxy can be applied by brush.

Item # 96092 12 lb. kit

COATING HINTS

- You may smooth out any composite repair product using isopropyl alcohol (IPA) or acetone and a gloved hand.
- When applying two coats of Loctite® Nordbak® Brushable Ceramic, a different color can be used for each: grey and white. When the first coat begins to wear, the second color coat will show through, providing an accurate visual indicator of wear.

HELPFUL HINTS

* Made-to-order item.

Your Source for **COATINGS**
WEAR-RESISTANT
COATINGS



[Loctite® Wear-Resistant Coatings Properties & Applications Chart]

	LOCTITE® PRODUCT	ITEM NUMBER	PACKAGE TYPE/SIZE	COVERAGE (FT² @ 1/4 IN. THICKNESS)	COLOR	MAXIMUM OPERATING TEMPERATURE (°F)	COMPRESSIVE STRENGTH (psi)	HARDNESS (SHORE D)	WORKING TIME (MINUTES) 77°F	FUNCTIONAL CURE (HOURS) 77°F	MIX RATIO BY VOLUME (R : H)	
COARSE/LARGE PARTICLE ABRASION	NORDBAK® WEARING COMPOUND	1324008 1323940	5 lb. kit 25 lb. kit	1.75 8.7	Grey	250	16,000	90	30	7	2:1	
	NORDBAK® HIGH TEMPERATURE WEARING COMPOUND	99112	25 lb. kit	8.7	Grey	450	15,000	90	30	N/A	4:1	
	NORDBAK® ULTRA-HIGH TEMPERATURE WEARING COMPOUND	96392	25 lb. kit	8.7	Red	550	N/A	90	30	N/A	2.5:1	
	NORDBAK® FAST CURE WEARING COMPOUND	96373	6 lb. kit	2.3	Blue	225	10,000	90	10	3	2:1	
	NORDBAK® COMBO BEAD WEARING COMPOUND	1324571	6 lb. kit	2.3	Grey	250	13,000	90	25	8	2:1	
	NORDBAK® LOW ODOR WEARING COMPOUND	41343	25 lb. kit	8.75	Grey	250	16,000	90	30	7	2:1	
FINE PARTICLE ABRASION	NORDBAK® PNEU-WEAR	98383 98382	3 lb. kit 25 lb. kit	1.1 9	Grey	250	15,000	85	30	6	4:1	
	NORDBAK® HIGH TEMPERATURE PNEU-WEAR	98372	25 lb. kit	8.7	Grey	450	15,000	90	30	N/A	4:1	
	NORDBAK® ULTRA-HIGH TEMPERATURE PNEU-WEAR	96332	25 lb. kit	8.8	Red	550	N/A	90	30	N/A	2:1	
	NORDBAK® FAST CURE PNEU-WEAR	96363 1117828***	6 lb. kit 25 lb. ki	2.3 9.6	Blue	225	12,000	90	10	3	2:1	
	NORDBAK® WEAR-RESISTANT PUTTY	98742 98743	1 lb. kit 3 lb. kit	0.37 1.11	Grey	225	11,600	89	30	N/A	2:1	
LIQUID/SLURRY TURBULENCE	NORDBAK® BRUSHABLE CERAMIC - GREY	98733 98732 997367***	2 lb. kit 6 lb. kit 12 lb. kit	12* 36* 72*	Grey	200	10,180	85	30	6	2.75:1	
	NORDBAK® BRUSHABLE CERAMIC - WHITE	96443	2 lb. kit	12*	White	200	10,866	85	15	5	2.8:1	
	NORDBAK® HIGH TEMPERATURE BRUSHABLE CERAMIC	96433 997369***	2 lb. kit 12 lb. kit	12*	Red	550	16,000	90	120	N/A	2.6:1	
IMPACT WEAR RESISTANCE	NORDBAK® HIGH IMPACT WEARING COMPOUND	1327836	25 lb. kit	8.75	Grey	250	12,000	85	30	6	2:1	
	FIXMASTER® FLEX 80™ PUTTY	97423 97422	1 lb. kit 6 lb. kit	94** 560**	Black	180	N/A	87 ^σ	10	8	2.5:1	
SPECIALTY WEAR RESISTANCE	NORDBAK® CASTABLE WEARING COMPOUND	98992	25 lb. kit	277 in. ³	Grey	225	18,500	90	30	6	2:1	
	NORDBAK® CERAMIC TILE ADHESIVE	1324544	20 lb. kit	12	Beige	200	14,000	88	60	12	1:1	
SPECIALTY COATINGS	NORDBAK® CHEMICAL RESISTANT COATING	96092	12 lb. kit	74 sq. ft. at 20 ml thickness	Grey	150 wet/ >200 dry	10,000	83	N/A	N/A	2.3:1	

* 20 mil thickness ** in.² at 1/4 in. thickness ^σ Shore A *** Made-to-order item.
 △ Good Choice ▲ Preferred Choice ■ Requires heat cure. See Technical Data Sheet.
 PLEASE NOTE: Properties are based on mixing 1 lb. mass at 77°F, ultimate cure.

	MIX RATIO BY WEIGHT (R:H)	AGENCY APPROVALS	FINE PARTICLE ABRASION	MULTIPLE PARTICLE ABRASION	IMPACT RESISTANCE	CHEMICAL CORROSION PROTECTION	HIGH TEMPERATURE RESISTANCE	FAST CURE	CORROSION PROTECTION	TILE INSTALLATION	PUMP REPAIR	ELBOWS	FAN HOUSINGS	CYCLONES	CHUTES
	2:1	NEHC, NAVSEA									△	△	▲	△	▲
	3.9:1	N/A					▲				△	△	▲	△	▲
	2.85:1	N/A					▲				△	△	▲	△	▲
	2:1	N/A						▲			△	△	▲	△	▲
	2:1	N/A	△	▲								△	△	△	△
	2:1	N/A	△	▲											
	4:1	ABS, CFIA, NEHC, NAVSEA, Lloyd's	▲	△							▲	▲	△	▲	△
	4:1	N/A	▲	△			▲				▲	▲	△	▲	△
	2.27:1	N/A	▲	△			▲				▲	▲	△	▲	△
	2:1	CFIA	▲	△				▲			▲	▲	△	▲	△
	2:1	N/A				△			△		▲	▲	△	▲	△
	4.8:1	ABS, CFIA, NSF (pending)				△			▲		△				
	4.5:1	CFIA				△			▲		△				
	4.25:1	N/A				△	▲		▲		△				
	2:1	N/A			▲										
	2.6:1	ABS			▲										
	6.8:1	N/A	△	△		△						▲		▲	
	1:1.25	N/A			△					▲					
	3.4:1	CFIA													